

# Joint Board of Advisors Meeting

---

September 17, 2004

Purdue School of Engineering and Technology,  
IUPUI



# Joint Board of Advisors Meeting Agenda

---

- 12:00 – 12:45 p.m. Buffet Luncheon
- 12:45 – 1:00 p.m. Welcome and Introductions
- 1:00 – 2:00 p.m. Economic Development Forecast and the Power of Partnership in Collaborative Relationships
- 2:00 – 2:30 p.m. Dean's Report
- 2:30 – 3:00 p.m. Research, Scholarship and Creative Activity
- 3:00 – 3:45 p.m. Poster Session – faculty and student research
- 3:45 – 4:15 p.m. Overview of the 21st Century Research and Technology Fund
- 4:15 – 4:45 p.m. Federal Funding Opportunities
- 4:45 – 5:00 p.m. Meeting wrap-up
- 5:00 p.m. Adjourn



# Joint Board of Advisors Meeting

---

Welcome and Introductions

# Joint Board of Advisors Meeting

---

Keynote Speaker

**Kathy Davis, Lt. Governor**

Power of Partnership in Collaborative  
Relationships Between Education,  
Government and Industry



# Dean's Report for Joint Board of Advisors Retreat

---

September 17, 2004

Purdue School of Engineering and Technology,  
IUPUI



# School Report

---

- Strategic Planning 2003-06
- Faculty and staff update
- Academic programs and enrollment
- External grants and contracts
- Comprehensive campaign
- Finances
- Space

# 2003-06 School Strategic Plan

---

- Groups of faculty, staff, administrators, alumni, and industry advisors participated.
- Approved by the School Faculty Senate
- Static version is available on the Web:
  - <https://www.engr.iupui.edu/engtech/sPlan.shtml/>
- Dynamic version is available on the Web:
  - <https://www.et.iupui.edu/strategicplanning/>

# Faculty and Staff Update

---

## □ Our losses

- Pat Ault, Carmen Boje, Jim Cowan, Sally Frettinger-Devor, Ron Kelly, Michael Knieser, Keith Kovach, Allison Lewis, Marv Needler, Terri Ryckaert, Mary Reiman, and Greg Smith.

## □ Our gains

- Mark Bannatyne, Jim Brown, Laura Breedlove, Carolyn Conrad, David Dellacca, Mary Anne Frank, Becky Fitterling, Joe Huerkamp, Kelly Koher, Josh Killey, Pam Neal, Darrell Nicholson, Tiffany Persson, Karen Siurek, Anne Shiver, Anwar Sohel, Charles Turner, Jessica Vance, Wei Wang, Robin Waldron, Heather Woodward, and Dong Xie.

## □ On sabbatical or leave of absence

- Zina Ben-Miled, Mohamed El-Sharkawy, Stephen Hundley, Ali Jafari, Razi Nalim, and Ramana Pidaparti.

# Academic Programs

---

- ABET visit for reaccreditation of computer, electrical, and mechanical engineering programs: October 17-19, 2004
- Newly approved programs:
  - BS in Biomedical Engineering
  - BS in Technology with major in Interior Design Technology
  - Network Security Certificate
- Dual degree programs
  - Five-year BSME/MSME
  - MSE/MBA
- Joint degree programs
  - PhD in Electrical and Computer Engineering
  - PhD in Mechanical Engineering
  - MS in Technology

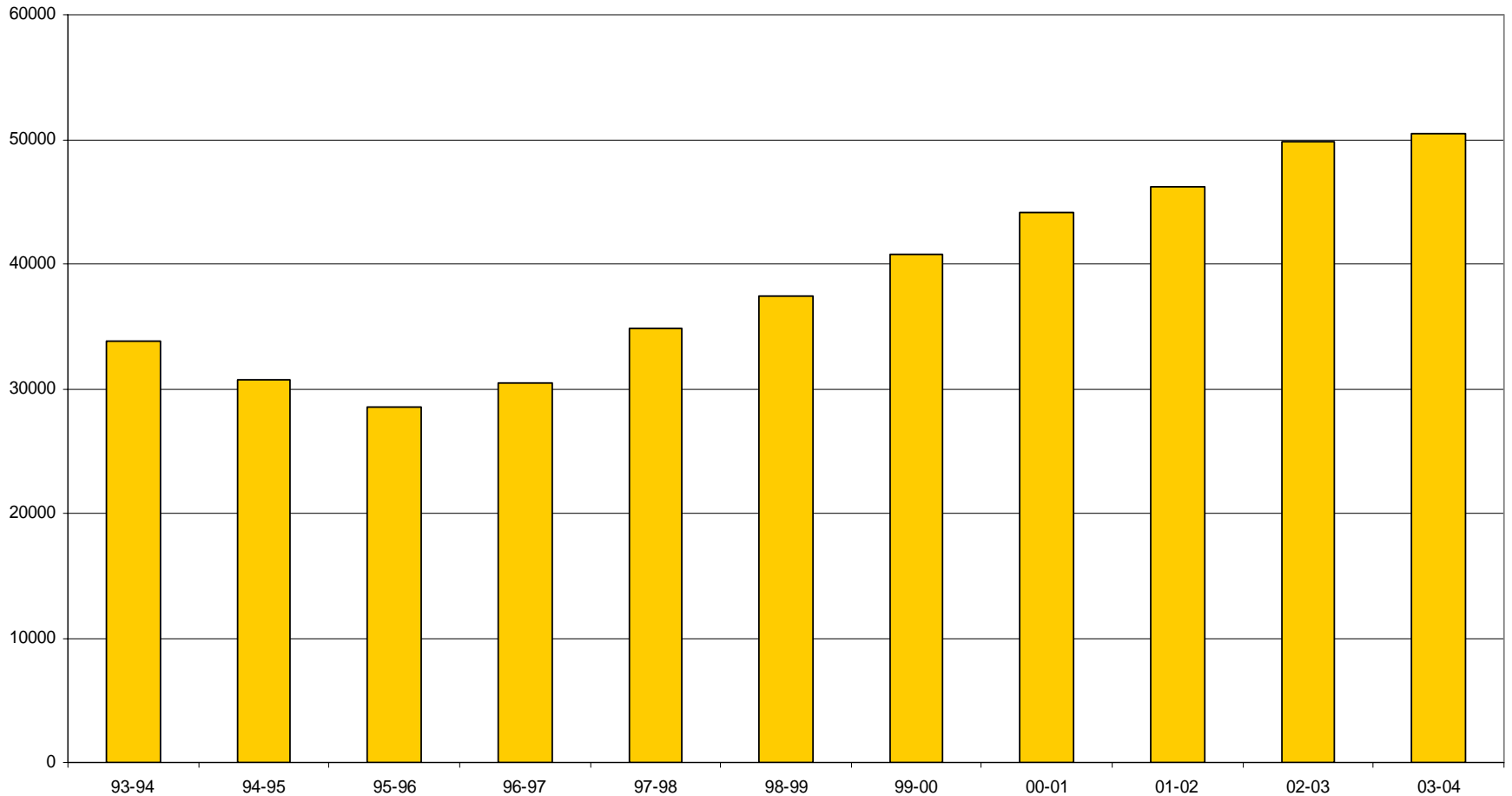


# Enrollment and Student Profiles

---

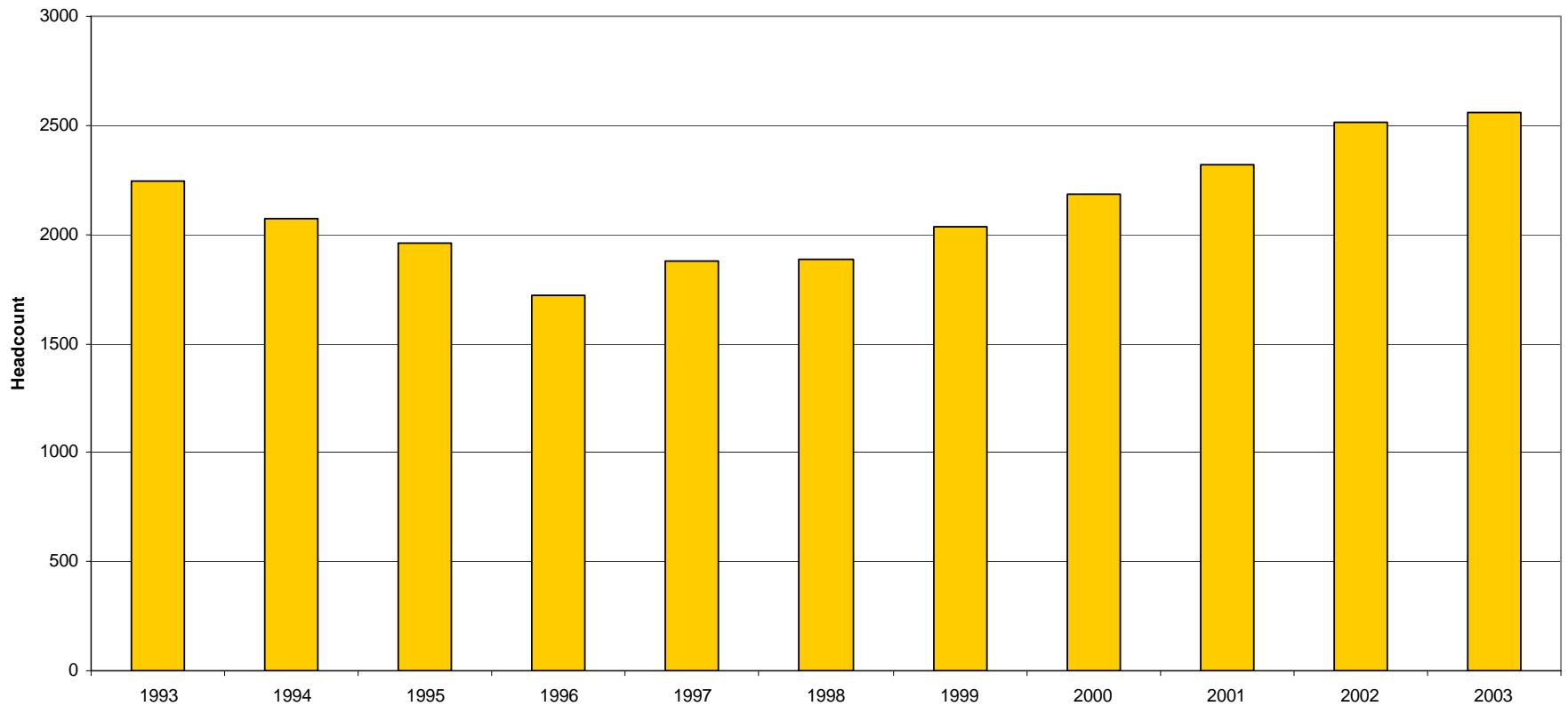
- Student credit hours
- Undergraduate and graduate headcount
- Long range headcount and credit hour trend
- IUPUI and School comparisons
- Student profiles
  - Full-time versus part-time
  - Residency
  - Gender
  - Ethnic
  - Age

# 10 Year Trend – E&T Student Credit Hours

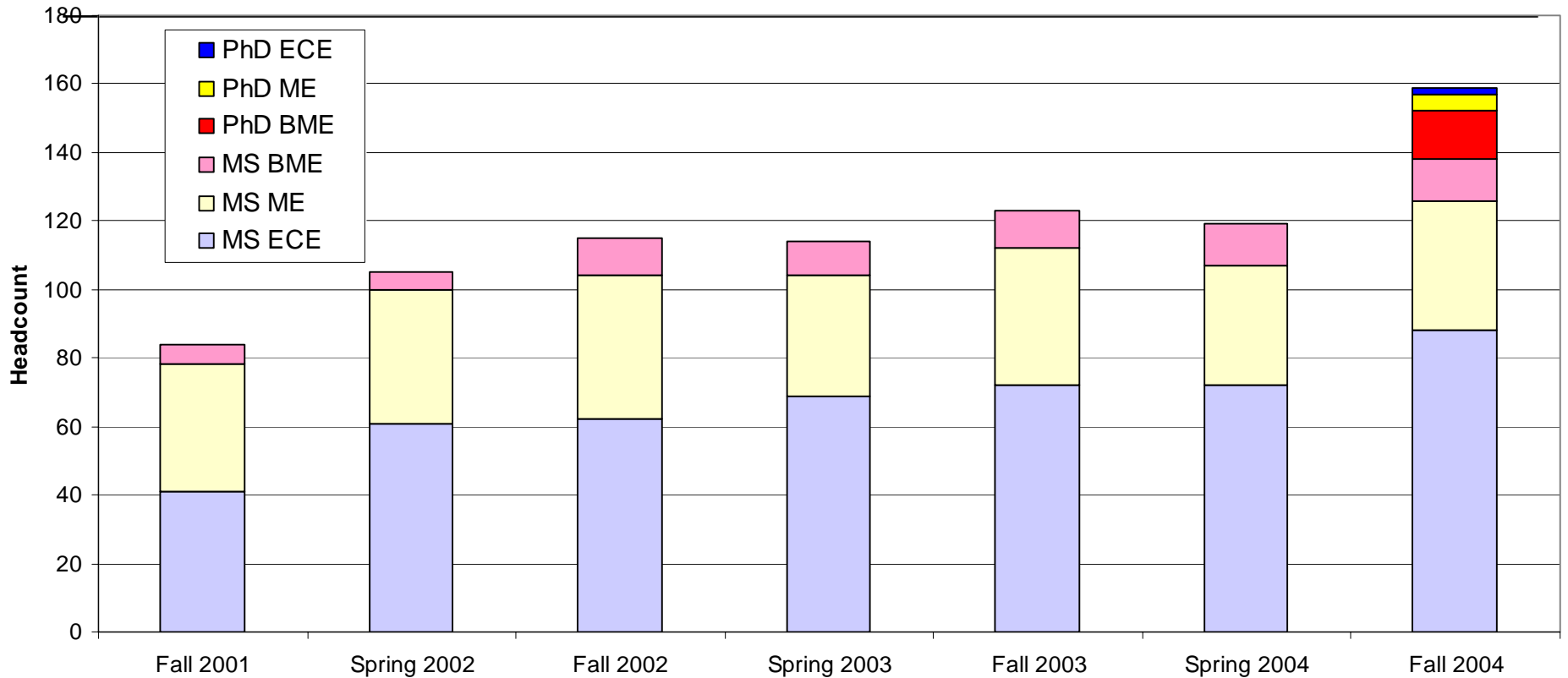


# 10 Year Trend – E&T Student Headcount

---

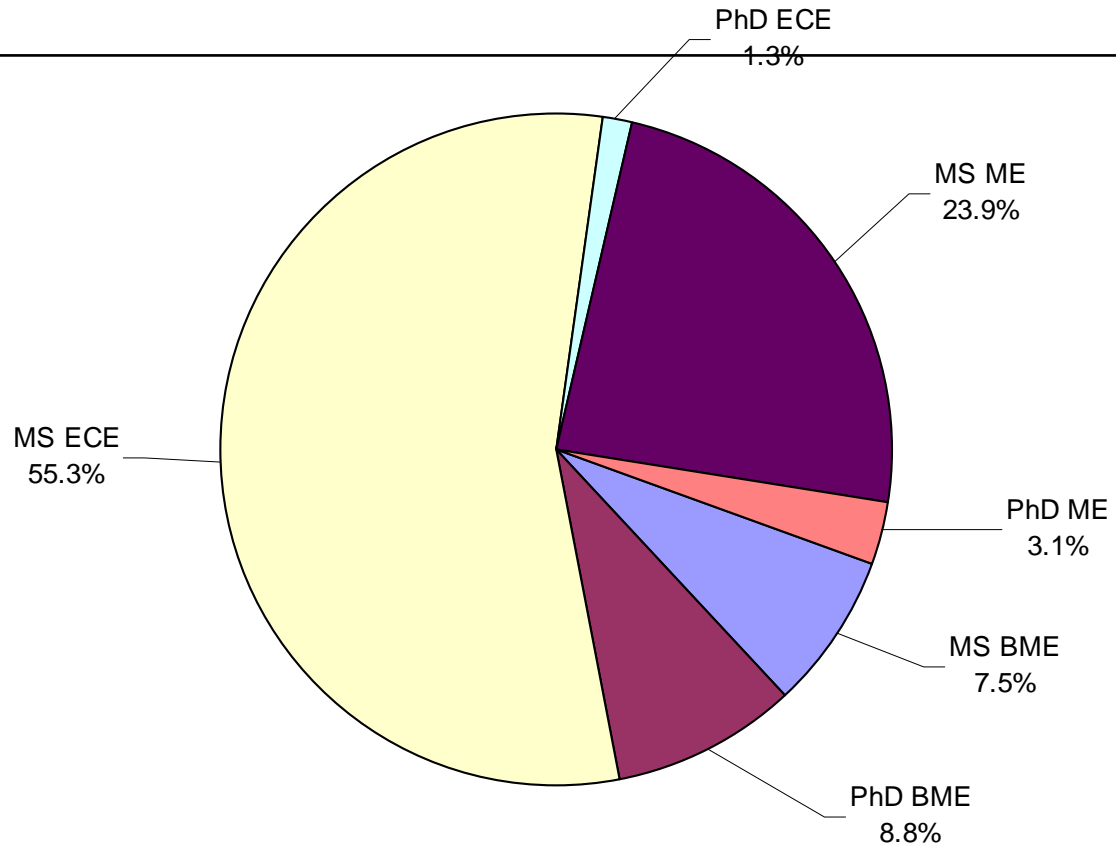


# E&T Graduate Student Headcount

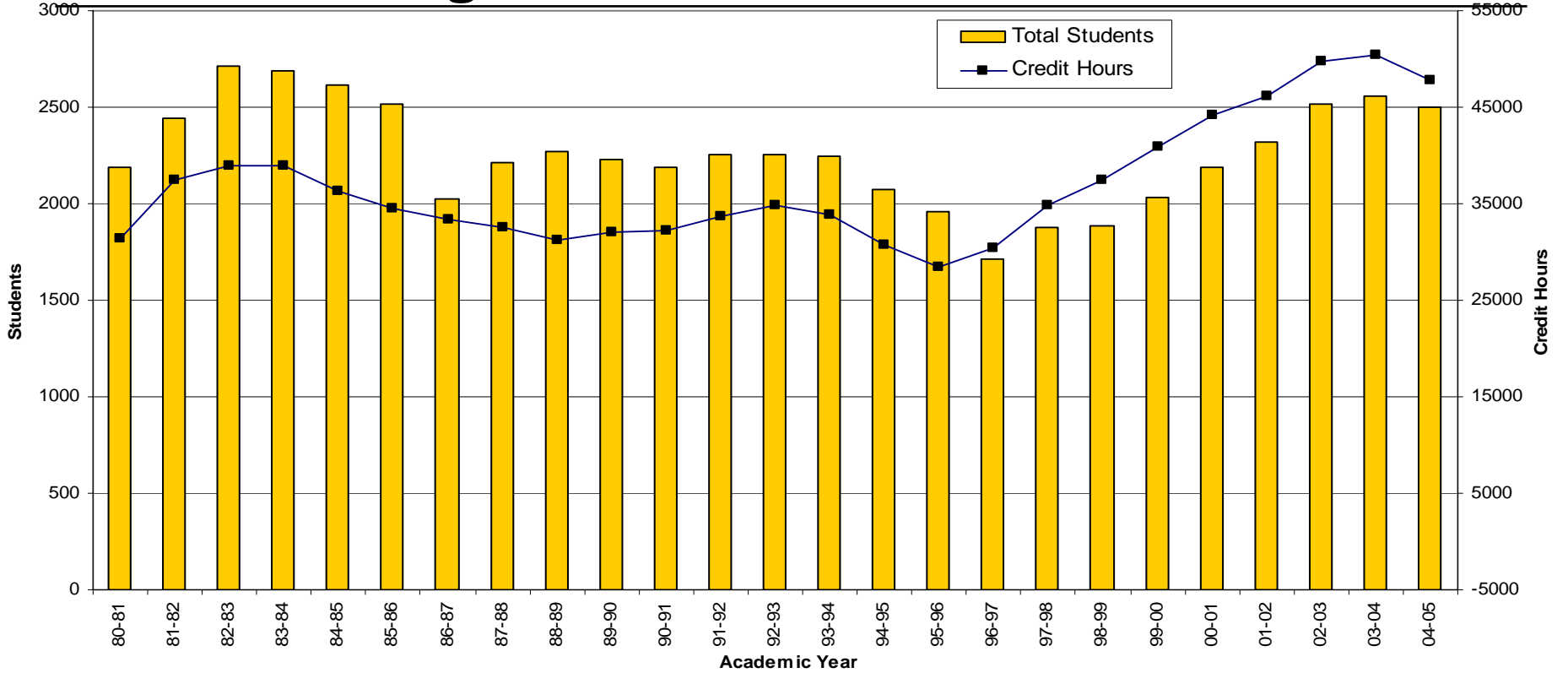




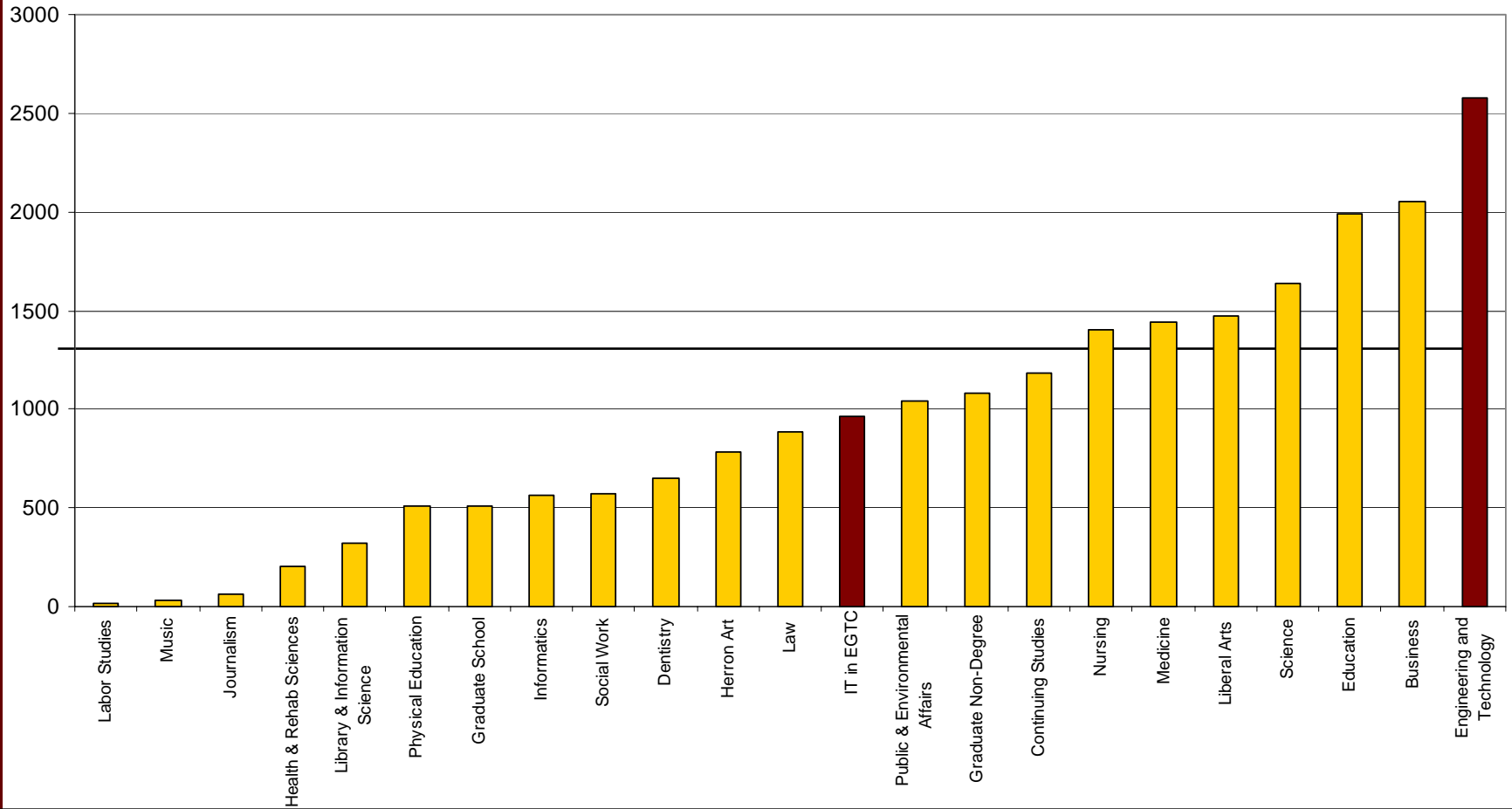
# Fall 2004 Graduate Enrollment



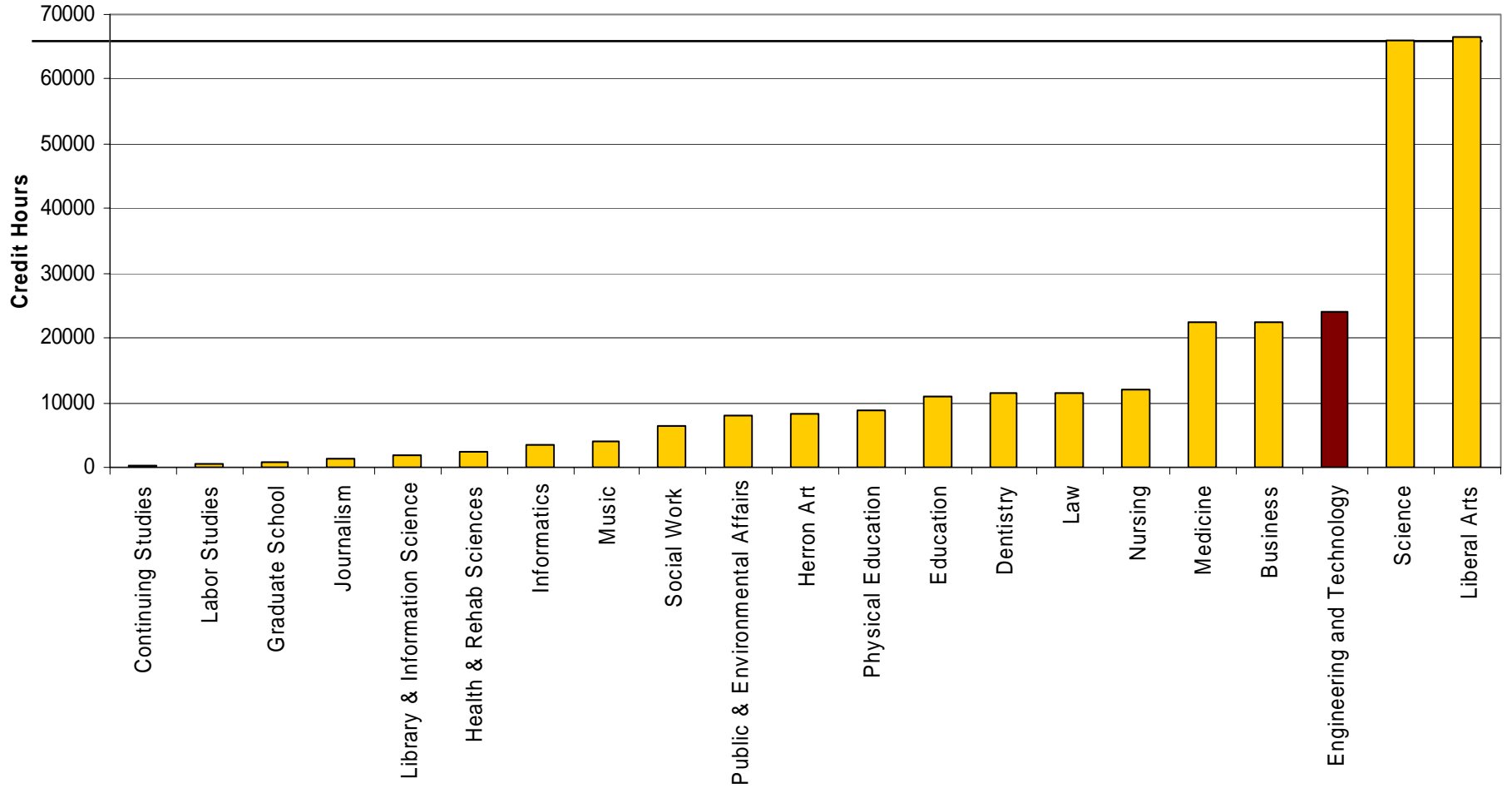
# Long Term Trend - E&T Enrollment



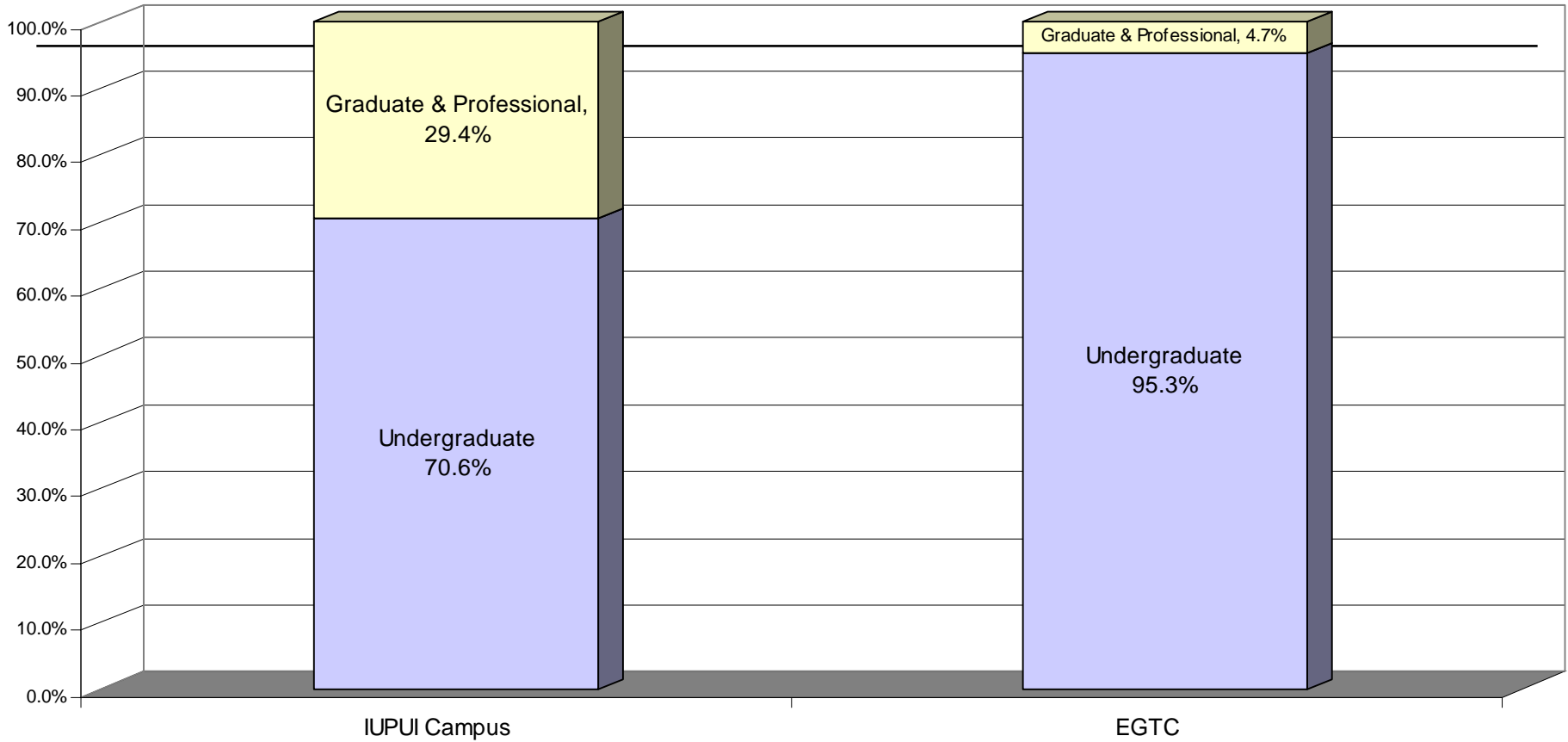
# Fall 2003 IUPUI Headcount



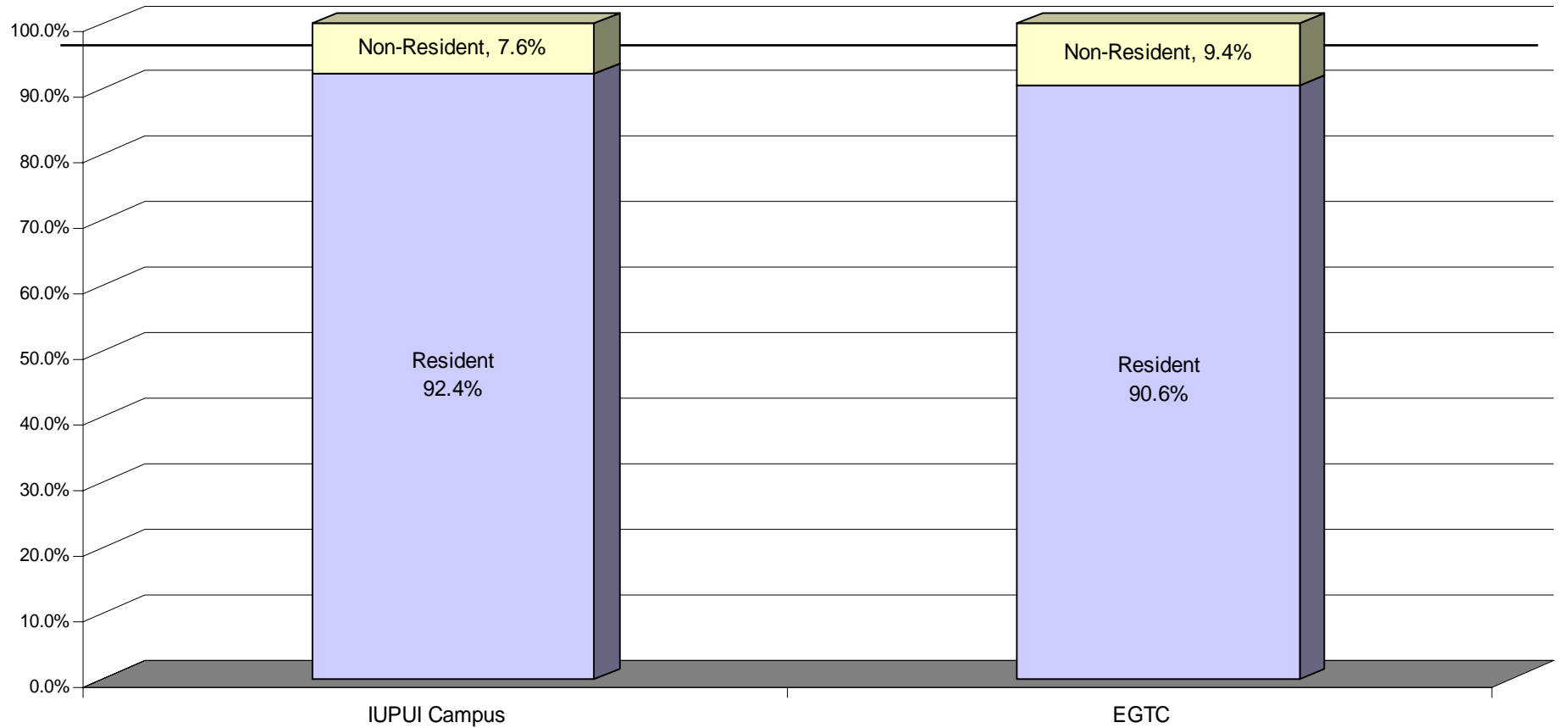
# Fall 2003 Campus Credit Hours



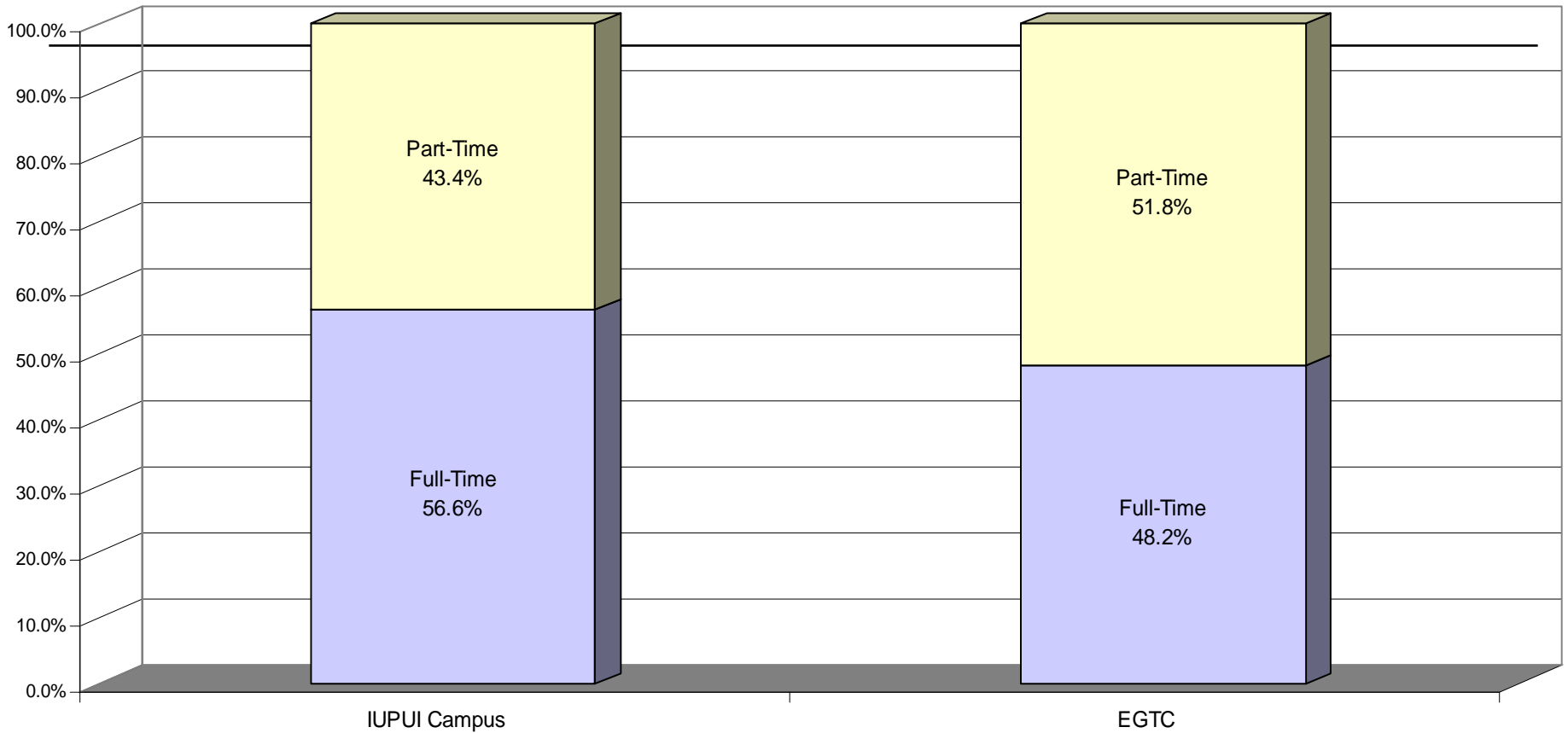
# Comparison of E&T Student Degree Level



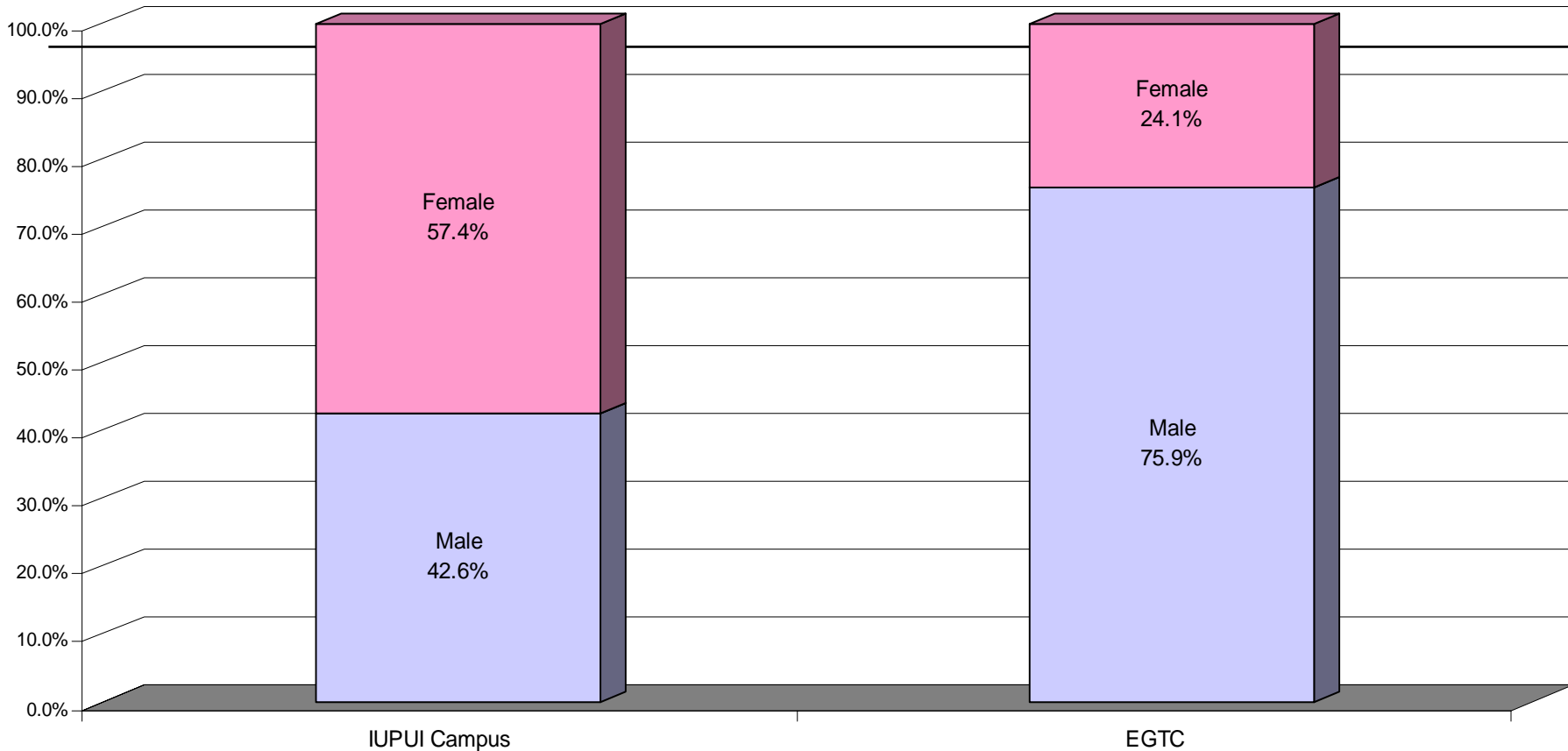
# Comparison of E&T Student Residency



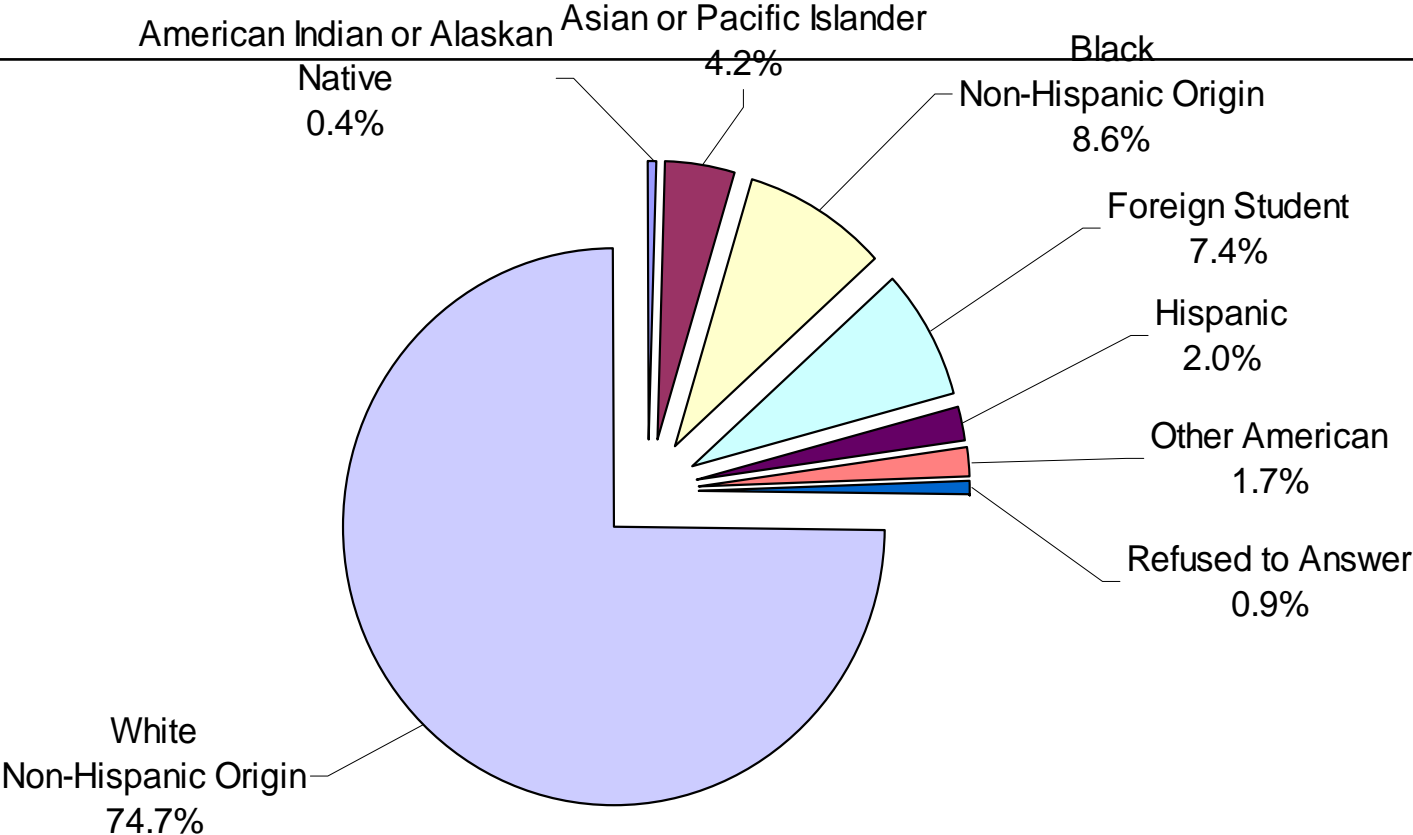
# Comparison of E&T Student Full-Time Status



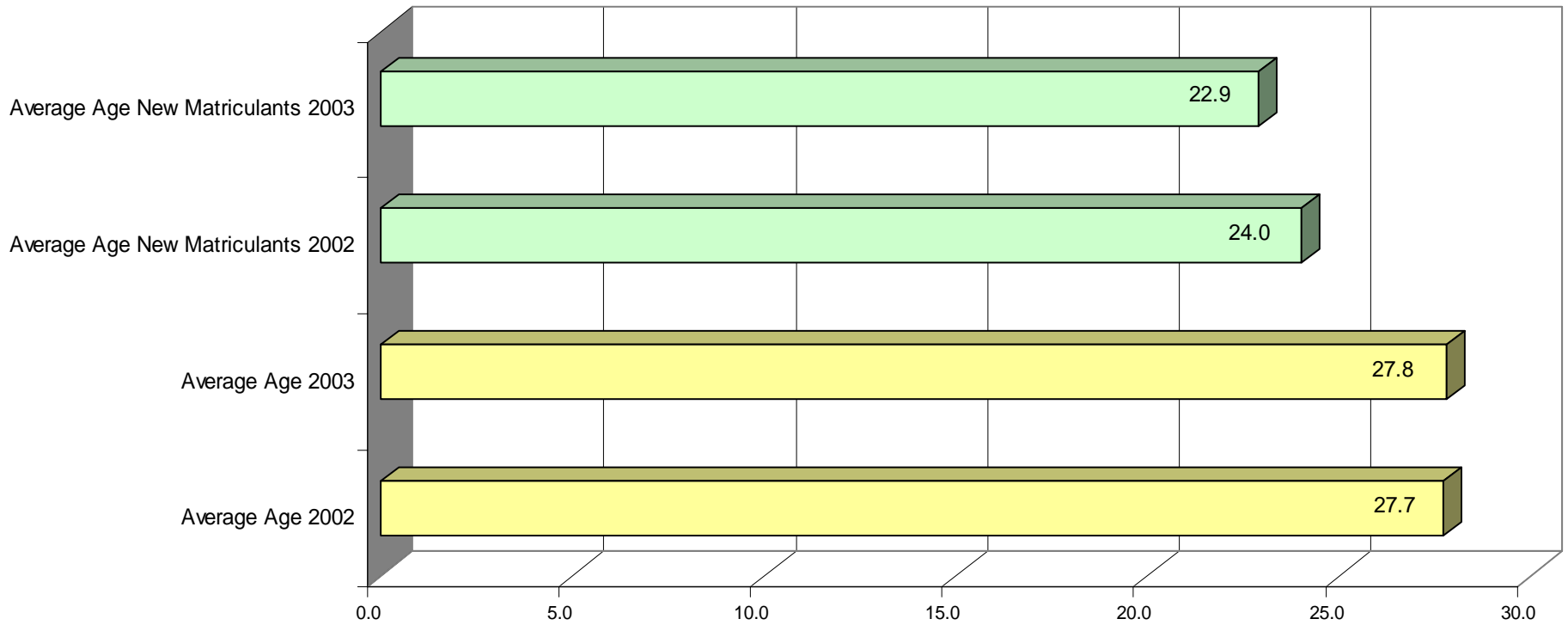
# Comparison of E&T Student Gender



# Comparison of E&T Student Ethnicity



## Comparison of E&T Student Average Age





# Comprehensive Campaign

---

- IUPUI
  - Philanthropic
  - Non-government grants
  - Riley memorial Association
- School



# IUPUI Comprehensive Campaign

<b>7/1/97 – 06/31/04</b>	<b>Goal</b>	<b>Actual</b>	<b>% of Goal</b>
<b>Philanthropic Support</b>	\$365,000,000 (\$290M – SOM)	\$548,018,104	150.14%
<b>Non-Government Grants</b>	\$290,000,000	\$411,613,546	141.94%
<b>Riley Memorial Association</b>	\$45,000,000	\$79,411,178	176.46%
<b>Total</b>	\$700,000,000	\$1,039,042,828	148.43%



# E&T Comprehensive Campaign

<b>Goal</b>	<b>Documented Gifts and Pledges</b>	<b>Documented Expectancies</b>	<b>Total Raised</b>	<b>% of Goal</b>
\$8,000,000	\$8,372,213	\$575,000	\$8,947,213	111.84%

Designation of Gifts:

Academic Divisions, Department Directed: \$ 4,253,906

Faculty & Staff Compensation: \$1,900,000

Student Scholarships, Awards and Fellowships: \$365,188 + \$325,000 (expectancies which are department/program designated)

Research: \$21,875

Public Service and Extension (non-instructional services): \$4,100

Other Restricted Purposes: \$1,735,300

Unrestricted Expectancies: \$200,000

# Finances

---

- We did not have budget deficit for 2004-05.
- Student credit hours declined for fall 2004. If the trend continues for spring 2005,
  - We will have budget deficit for 2005-06.
  - We will not have cash funds.

# Space

---

- ET Basement Renovation
  - Projected occupancy date: August 2005
  - Net additional space: 12,000 sq ft
  - Cost estimate: \$1.0 - 4.7M in phases
- IUPUI Research III Building
  - Projected occupancy date: August 2007
  - Net available space: 12,000 sq ft
  - Cost estimate: Not available
- IUPUI Innovation Center
  - Project start date: 2007-09 Biennium



# Joint Board of Advisors Meeting

---

Research, Scholarship and Creative Activity

**Yaobin Chen, Associate Dean for Research**



# External Grants and Contracts

---

- Two year comparison
- Long term trend
- Doubling the research effort
- IUPUI and school trends

# Research and Sponsored Programs

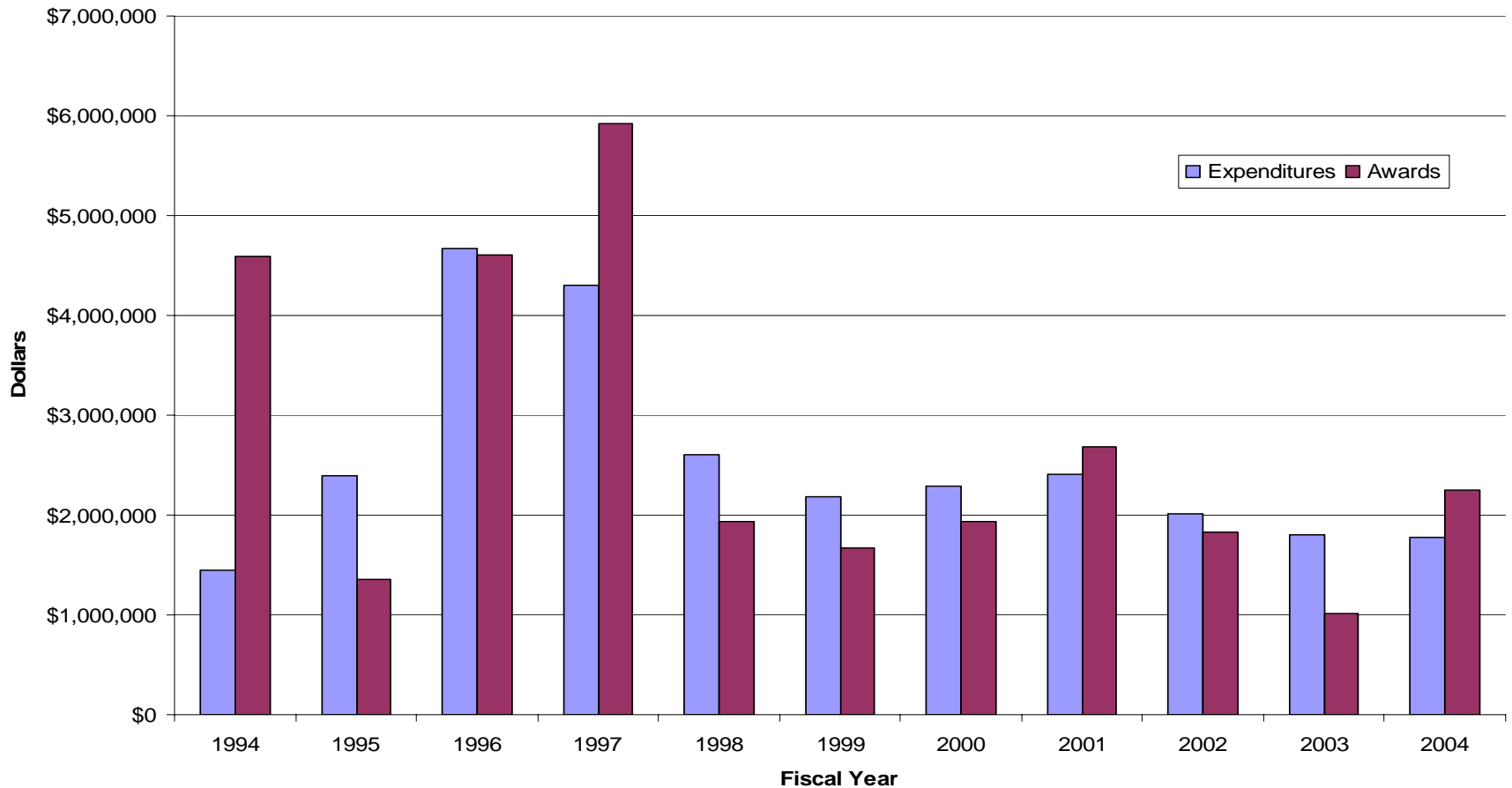
## - Two-year comparison (FY02/03 and FY03/04)

	FY02-03	FY03-04	Change	% Change
Proposals	59	71	12	17%
Awards	\$1,010,211	\$2,247,986	\$1,237,775	122.5%
Awards/PI	\$67,347	\$149,866	\$82,519	122.5%
Indirect	\$189,978	\$439,426	\$249,449	131%
Expenditures	\$1,803,639	\$1,774,505	-\$29,134	-1.6%

# Research and Sponsored Programs

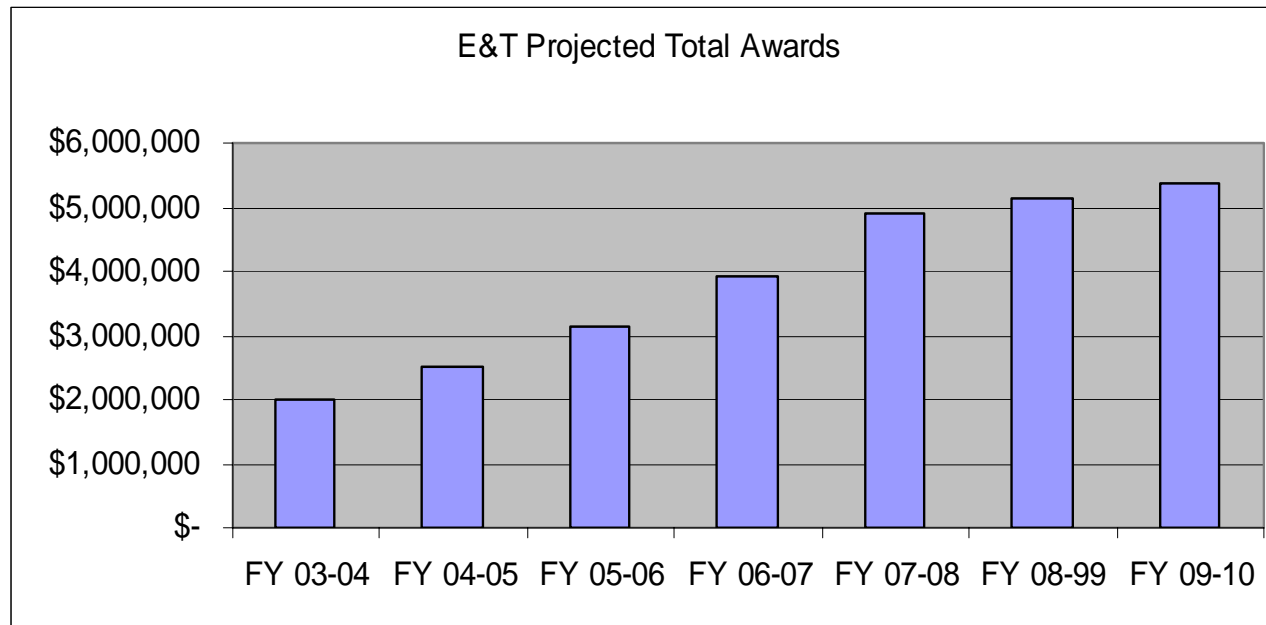
## - Awards and expenditures FY93/94 – FY03/04

E&T Research Expenditures and Awards for FY94-FY04



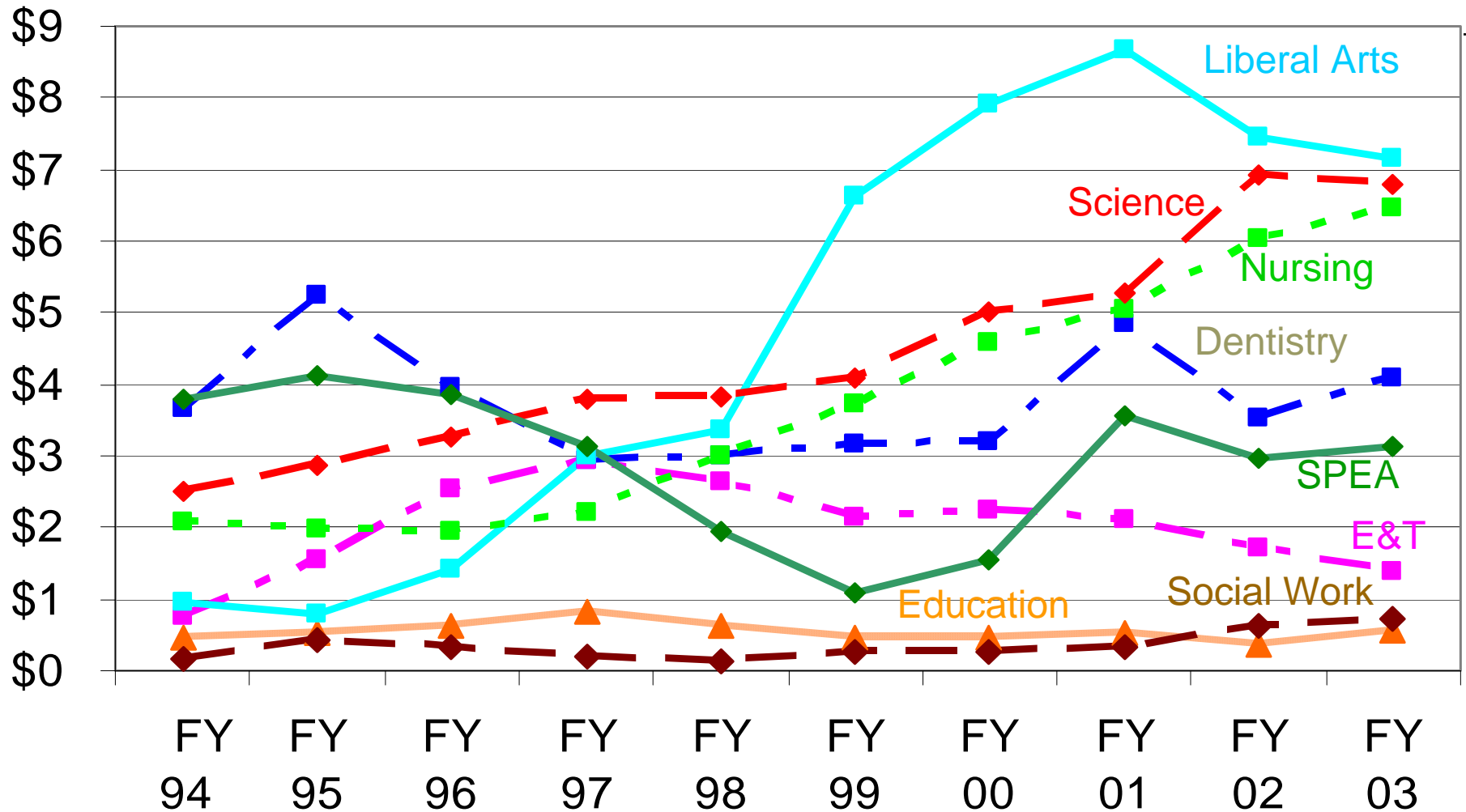
# Doubling Research Goal

- E&T doubling research goal by 2010: \$5.4M
- FY03-04 total awards: \$2,247,986
- FY04-05 (7/1-8/10/2004): \$1,042,305
- Projected total awards:



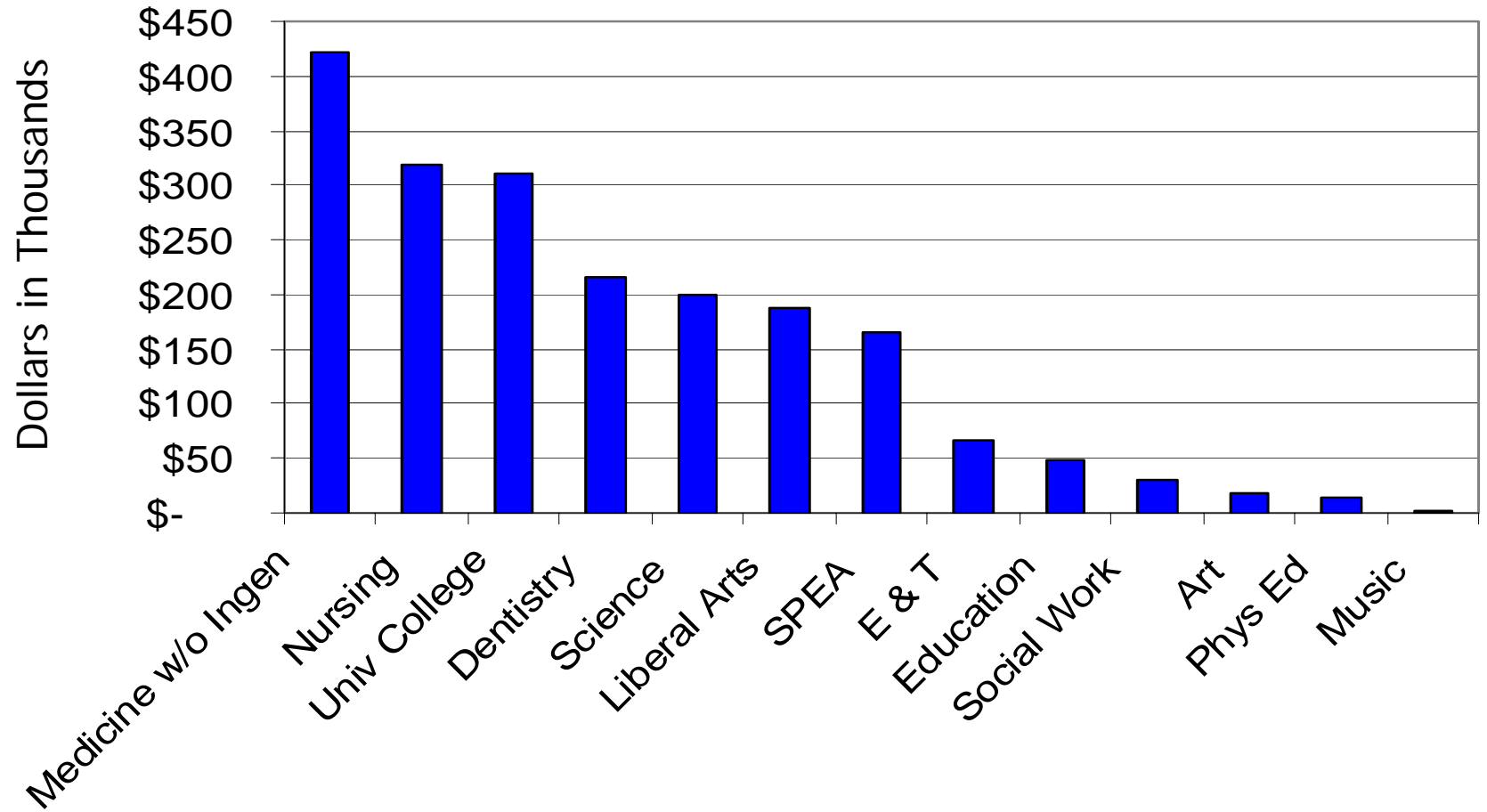
# IUPUI Sponsored Expenditures by Units

(in Millions of Dollars, not including Medicine)



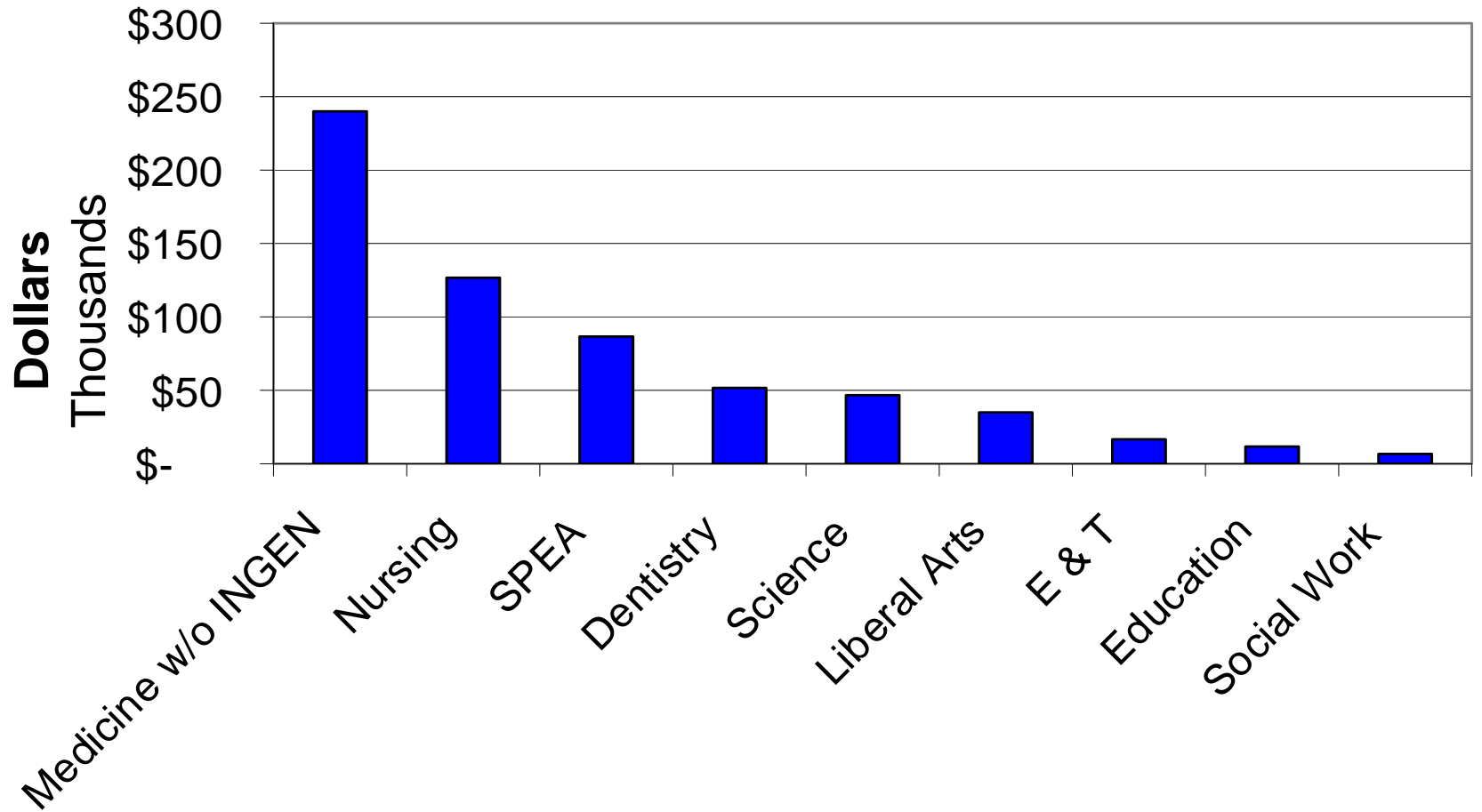
# Awards per PI for FY 02/03

## IUPUI Schools



# Awards per Faculty (FY 02/03)

## IUPUI Schools





# Joint Board of Advisors Meeting

---

Poster Session featuring  
faculty and student research



# Joint Board of Advisors Meeting

---

Overview of the 21<sup>st</sup> Century Research  
and Technology Fund

**Tony Armstrong, Director**



# Joint Board of Advisors Meeting

---

Federal Funding Opportunities

**Jim Wheeler, Director**

**Electricore**



# Joint Board of Advisors Meeting

---

- Wrap-Up



# Joint Board of Advisors Meeting

---

## CALL TO ACTION

1. What types of research and development exists in your organization that may parallel areas of expertise within the School?
2. Are there specific areas that may fit into funding requirements of the 21st Century Research and Technology Fund and research activities of the School?
3. How can the School/university improve its ability to market itself to local industry?

Please return this form before leaving the  
Joint Board of Advisors Meeting today  
and include contact information