



2007 Joint Boards of Advisors Meeting

September 28, 2007

IUPUI
**SCHOOL OF ENGINEERING
AND TECHNOLOGY**

A PURDUE UNIVERSITY SCHOOL
Indianapolis



IU News

- New IU President is Michael McRobbie
- The new directions
 - Education and research are the top two priorities with service (engagement) integrated into the first two.
 - Life and health science research is still the focus.
 - Internationalization is high priority.
 - Bloomington and Indianapolis are core campuses.
 - Bill Stephan is Vice President for Engagement.



School Report

- **2006-07 accomplishments and challenges**
 - Teaching and learning
 - Research and discovery
 - Engagement
- **2007-08 initiatives and plans**
 - Follow up of Action Groups recommendations
 - Realignment of programs and departments
- **Looking ahead**
 - Enrollment outlook
 - Grants and contracts
 - Development and fund raising



Selected Accomplishments of 2006-07

- Teaching and Learning
 - IUPUI Review of technology programs was completed.
 - ASEE Engineering and Technology Colleges Profiles
 - Second in US with number of BS Technology degrees
 - First in US with BS Technology degrees to women
 - The New York Times launched a new online initiative, Times Knowledge, which pairs New York Times content with faculty course material for both credit-bearing and continuing education courses at the college and university level via Epsilon Environment developed by Ali Jafari and his team at IUPUI CyberLab.
 - Charles Yokomoto and Pat Fox became ASEE Fellows.
 - Sixteen of the IUPUI Top 100 students were from our school this year. ME senior Kurush Savabi was the Top Male Student.
 - Justin Wenger (ME, golfer) was selected to Academic All-America Best Team (2nd IUPUI athlete)



Selected Accomplishments of 2006-07

- Research and discovery
 - Faculty submitted a total of one hundred seven external proposals during the 2006-07 academic year for \$35,657,139 of funding and forty two awards were received for a total of \$5,515,222. Notable research grants and contracts are:
 - Rongrong Chen, US Army, “Renewable Energy through Fuel Cell and Reformable Technologies”, \$1,270,000.
 - Steven Rovnyak, IPower, Inc, “Commercialization of an Integrated and Optimized Distributed Generation Interconnection System Controller-Phase II”, \$564,750.
 - Eri Kuno, NIH-NIMH, “Simulation Model for Mental Health System Modeling”, \$440,054.
 - Ghassan Kassab, NIH-NHLBI, “Pressure and Flow Induced Remodeling of Coronary Artery”, \$299,845.
 - Yingzi Eliza Du received ONR Young Investigator Award
 - Our faculty filed 12 invention disclosures, 3 new licenses, and 9 patent applications between July ‘06 and June ‘07.
 - Andrew Hsu received IUPUI Signature Center Grant to establish Lugar Center for Renewable Energy
 - Transportation Active Safety Institute was established as a result of partnership with Delphi Corporation



Selected Accomplishments of 2006-07

- Engagement
 - I-STEM initiative by Biocrossroads
 - Pathways to Engineering with IPS
 - International (Global Design Studio, GO GREEN, Engineers Without Borders)
 - Summer Programs
 - MEAP
 - Pathways to Engineering
 - Tech Camp
 - Power Camp
 - Bridge Program
 - Project Lead the Way
 - International Internship Program
 - Industry advisory groups and Alumni Board



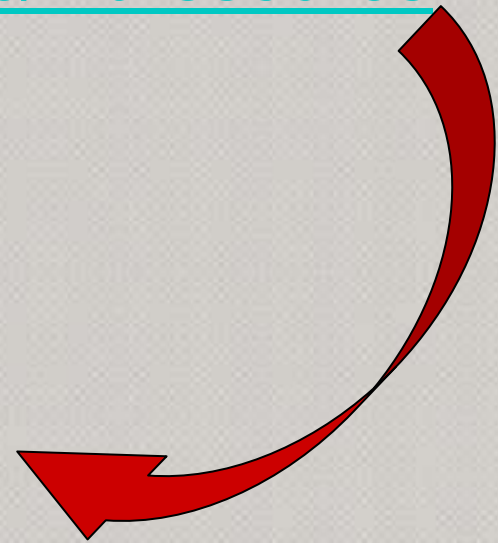
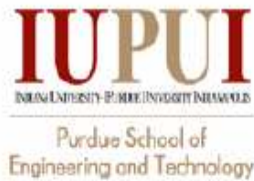
Dean's Industrial Advisory Committee (DIAC) Industry Resources/Programs Subcommittee

- **Mission statement:**

- Encourage more two-way interaction between industry and students/faculty/staff through activities such as
- Industry provides out-of-classroom experiences –industry tours, guest speakers, senior design projects, research and development projects, internship and co-op
- University provides development and delivery of short courses and refresher courses and faculty expertise
- Facilitate locating industry speakers and tours for classes and student groups.
- Develop a “First Stop” to find an industry resource
 - website links staff and student organizations to DIAC industry members
 - <https://www.et.iupui.edu/diac/indresource>

DIAC--Industry Resources Database

<https://www.et.iupui.edu/diac/indresource>



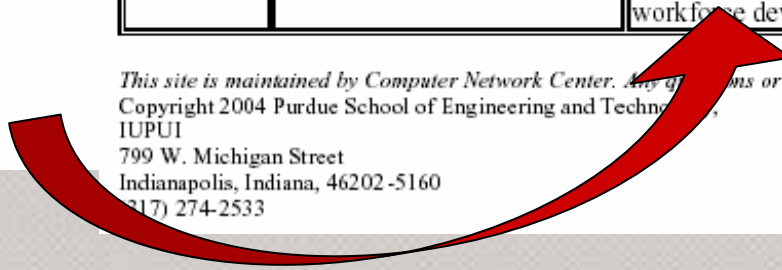
DIAC Industry Resources Database Search

This page will display DIAC company information based on the criteria you selected. Please make your selections and click on "Search Database".

- Controls Engineering
- Focused Topical Visits
- Intellectual Property and other legal services
- Interpersonal Skills for Engineers
- Lean Engineering
- Manufacturing Process
- Product Development and Design
- Product Life Cycle Management
- Project Management

DIAC Database Search Results:

Name	URL	Overview	Contact Name	Contact Email
Lange Advisors, Inc	http://www.langeadvisors.com	Lange Advisors is a life sciences consulting firm that focuses on business development, economic development and workforce development	Wade Lange	wade@langeadvisors.com



This site is maintained by Computer Network Center. Any questions or comments should be directed to [Lingma Lu](mailto:Lingma.Lu).
Copyright 2004 Purdue School of Engineering and Technology
IUPUI
799 W. Michigan Street
Indianapolis, Indiana, 46202-5160
(317) 274-2533



Follow up with Action Groups

- **Freshman Technology and Retention**
 - Academic Advising Service Center
 - Freshman and transfer student advising
 - Retention studies
- **Diversity Council**
 - School and campus plans
- **Internship and Career Services**
 - Formation of Career Services Office
 - Professional Practice Fee for junior and senior students
- **Industry Relations**
 - Director of Industry Relations (half-time): Joe Abella
 - Partial support from industry partners



Follow up with Action Groups

- **Space Allocation**
 - Allocation formula developed
 - Standing space committee was formed
 - Renovation continues both in ET and SL buildings
- **Grants and Contracts Process Improvement**
 - Campus review committee was established
 - Purchasing and few other processes will move to departments
- **Marketing**
 - Marketing firm is hired (Westcomm: Chris Watts)
- **Enrollment Management**
 - Shape enrollment for recruitment
 - Standing committee was formed
 - Address retention using early warning system



Follow up with Action Groups

- **Discipline Based Research**
 - Development plans for new faculty (involve chairs, associate dean for research, and dean)
 - More interaction between engineering and technology faculty members will be facilitated
- **General Education**
 - Committee (Conrad) continues its work
 - Plans to develop more school-based courses
- **Fundraising**
 - More access to alumni base
 - More department based fundraising activities



Follow up with Action Groups

- **K-12 and Ivy Tech**
 - Articulation agreements
 - PLTW,
 - Pathways programs,
 - New 3+2 program in engineering
- **Three new technology departments**
 - Engineering Technology
 - Design and Communication Technology
 - Computer, Information, and Leadership Technology

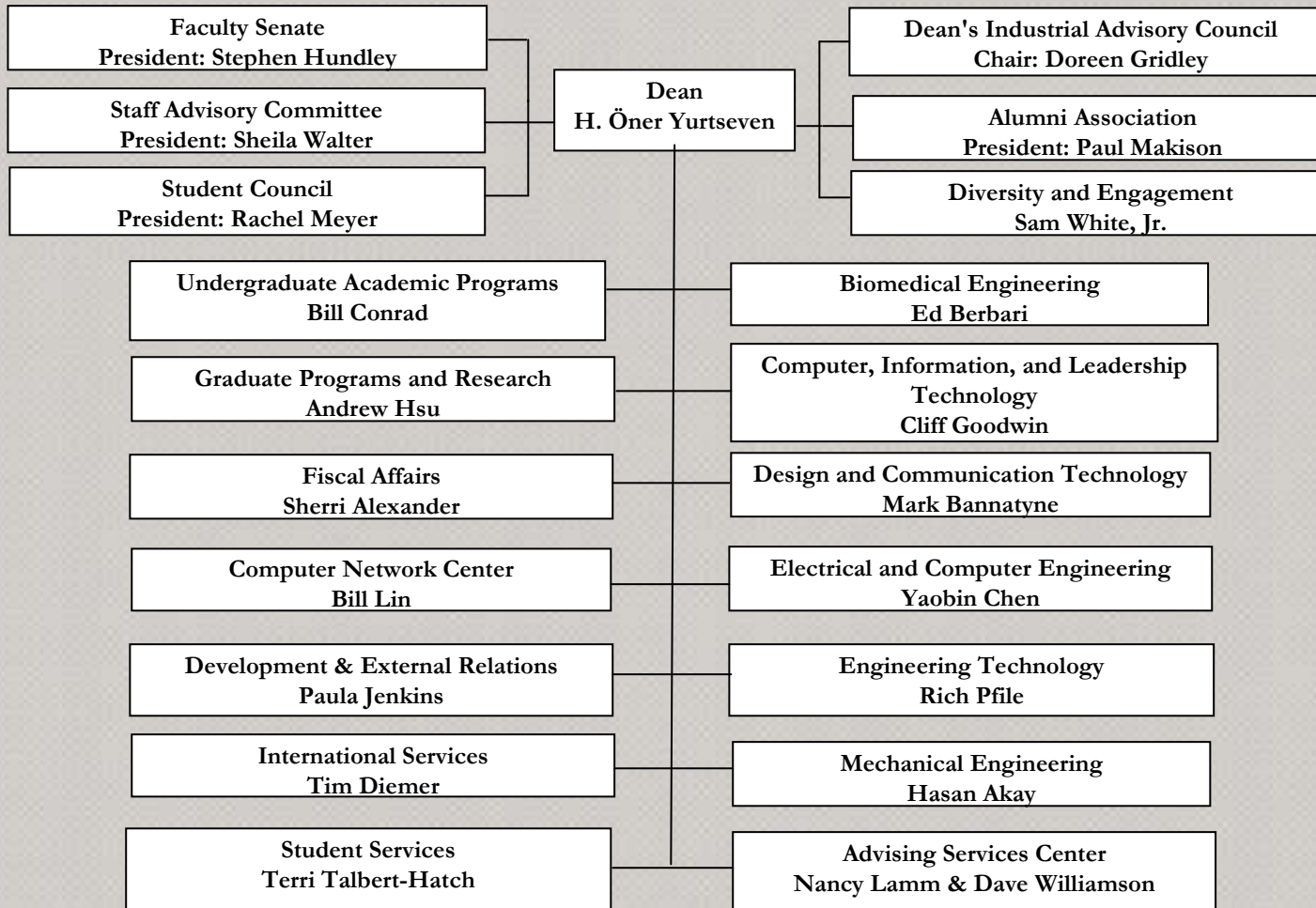


2007-08 Initiatives and Plans

- Academic initiatives
 - Motorsports Engineering-BS
 - CIDA accreditation visit
 - Improve retention and graduation rates
- Research and discovery
 - Existing centers (Lugar Center, TASI)
 - New signature centers
- Implement the recommendations of the Action Groups
 - Realignment of programs and services

Purdue School of Engineering and Technology, IUPUI

2007-08 Organizational Chart





Looking Ahead

- Enrollment
- Grants and contracts
- Engagement
- Budget



School Update

- Enrollment

- Student credit hours increased by 2.7% and the student headcount increased by 4.7% as compared to fall 2006 numbers
- Surge of international student registration in August
 - Students from Saudi Arabia for engineering and technology
 - Students from Iran for engineering programs

Admission Data: Applicants and Admits

Beginners	2005	2006	2007	Percent Change
Applicants	211	276	354	28.3%
Admits	204	222	300	35.1%
Percent Admitted	96.7%	80.4%	84.7%	

External Transfers	2005	2006	2007	Percent Change
Applicants	259	275	277	.7%
Admits	244	242	257	6.2%
Percent Admitted	94.2%	88%	92.8%	

Admission Data: Direct versus UC Admits

Beginning Freshmen	2005	2006	2007	Percent Change
Number of Applicants	582	727	816	12.2%
Admitted to UC	223	278	243	-12.6%
Admitted to School	204	222	300	35.1%

External Transfers	2005	2006	2007	Percent Change
Number of Applicants	368	399	410	2.8%
Admitted to UC	60	71	80	12.7%
Admitted to School	244	242	257	6.2%

Admission Data

- Average SAT scores
 - Engineering (1,153 in '06-'07 and 1,142 in '07-'08)
 - Technology (1,105 in '06-'07 and 1,100 in '07-'08)
- 12.5% of direct admits took one or more PLTW courses.
- We have students from NV, TX, MI, IL, NC, and KS (3 for Motorsports Program).
- 39 EDDP students (15 BME, 12 ME, 2 EE, 4 CmpE)
- 92 international student were admitted (55 from Saudi Arabia, 6 from Iran, and 31 from 21 countries).

Student Scholarships

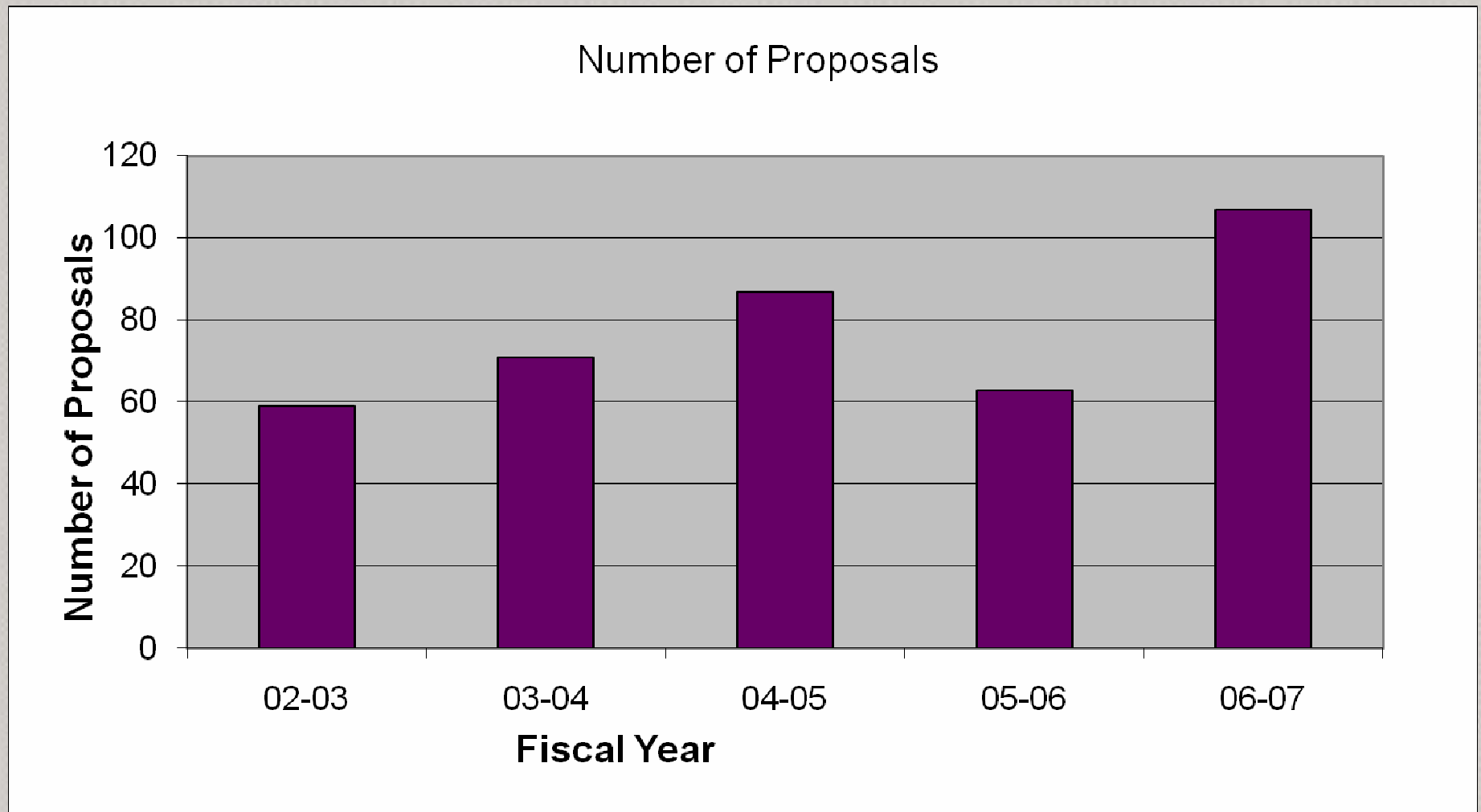
Campus Scholarships	2007-08 Offers	2007-08 Accepts	2006-07	2005-06
Val/Sal (\$5,000)	7	6	0	1
Academic Excellence (\$2,500)	30	16	17	9
Dean of Faculties (\$2,000)	55	28	28	24
First Generation (\$1,500)	30	19	7	12

Top Campus Scholarships	2007-08	2006-07	2005-06	2004-05
Bepko	0	4	6	2
Hoosier Presidential	3	3	3	
Plater International	3			

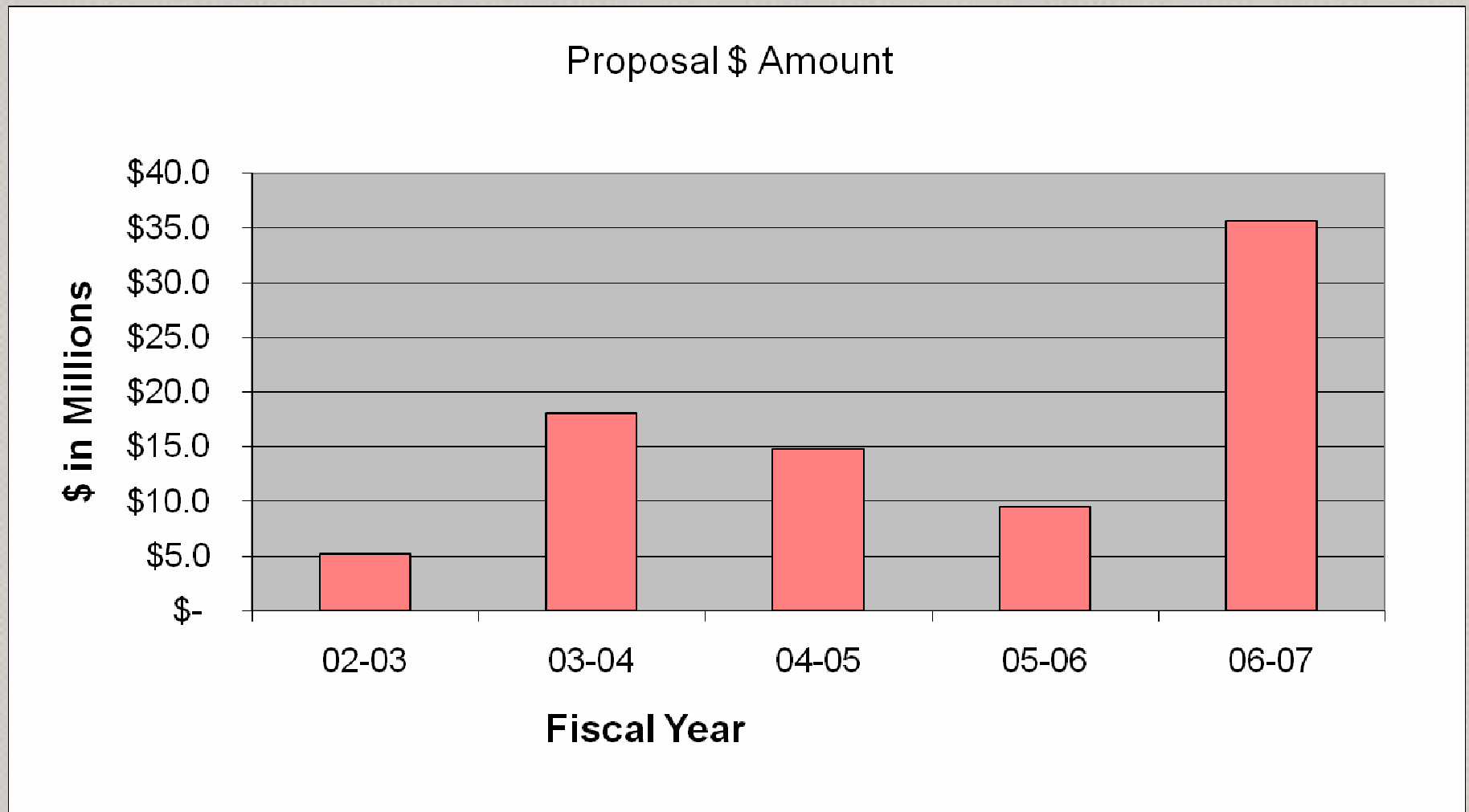
Enrollment Data

Calendar Year	Fall Semester Headcount	Student Credit Hours	Degrees Awarded			
			AS	BS	MS	Cert
2002-03	2,543	49,795	241	362	36	79
2003-04	2,575	50,394	282	337	30	104
2004-05	2,350	48,809	226	341	60	126
2005-06	2,213	46,221	193	364	45	91
2006-07	2,287	43,768	136	336	43	80
2007-08	2,394	44,000*				

Grants and Contracts Data

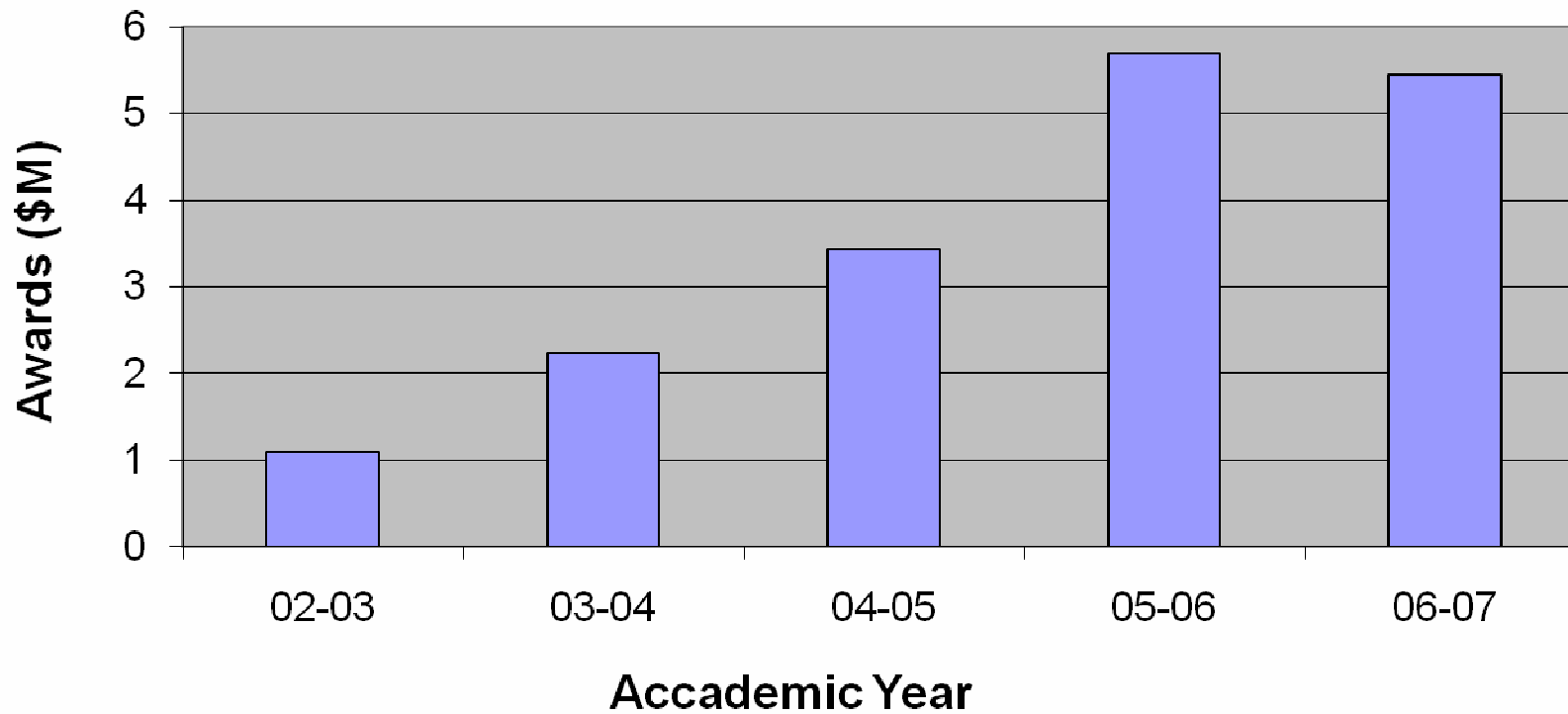


Grants and Contracts Data



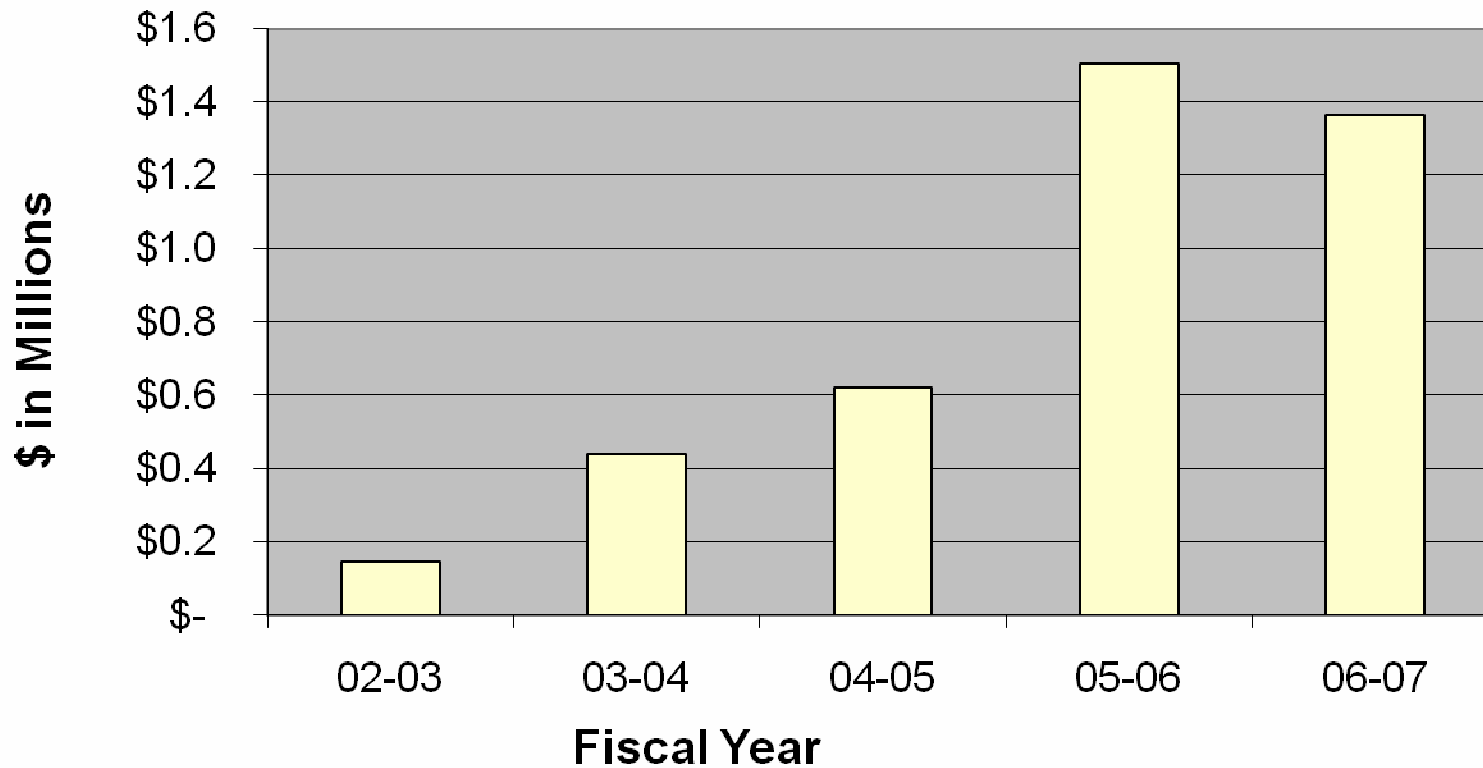
Grants and Contracts Data

Total Awards



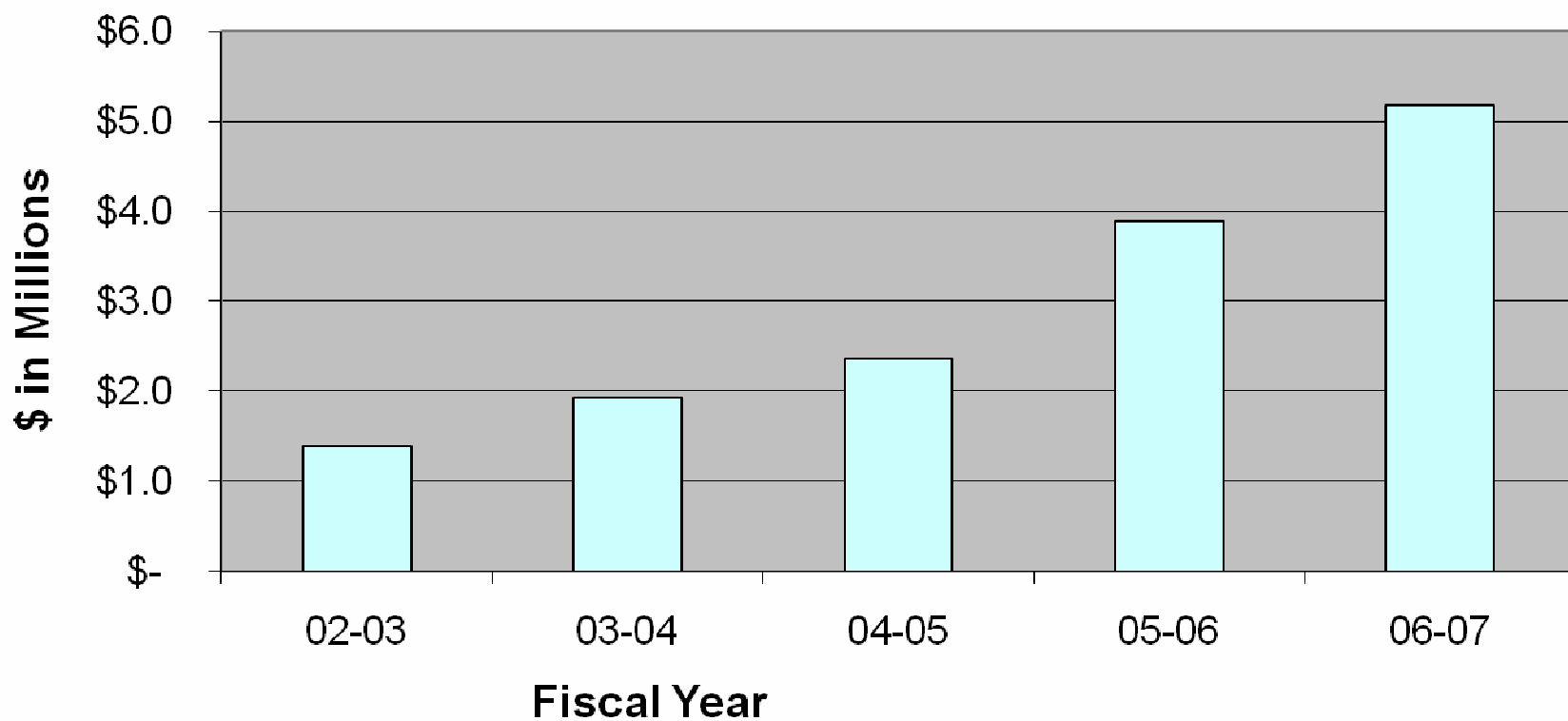
Grants and Contracts Data

Total Awards Indirect Cost



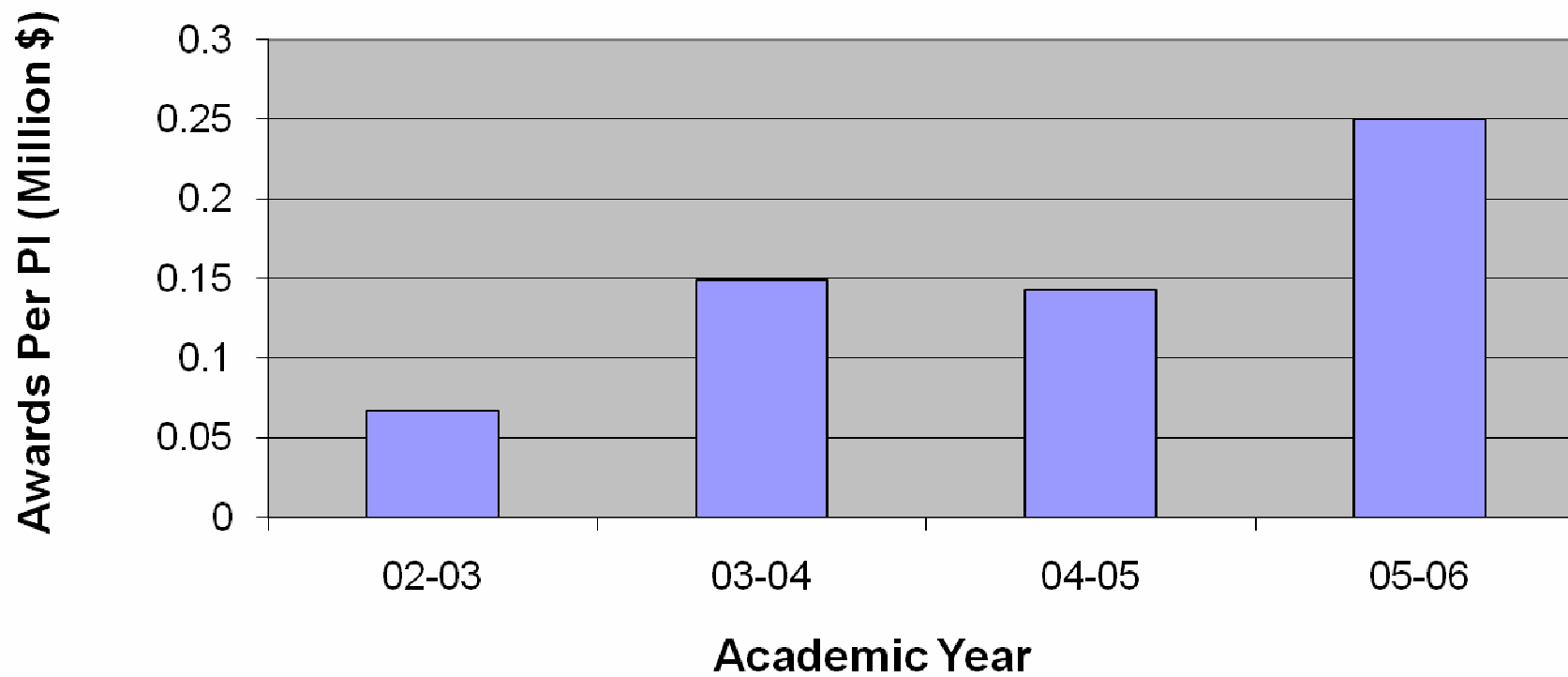
Grants and Contracts Data

Research Expenditure



Grants and Contracts Data

Awards Per PI



Development

FYE	Cash	In-Kind	Total	New Planned Gift Expectancies	Total Planned Gift Expectancies
00-01	\$ 406,489	\$ 358,229	\$ 764,718		
01-02	\$ 341,875	\$ 153,433	\$ 495,308	\$ 215,000	\$ 215,000
02-03	\$ 393,127	\$ 1,339,239	\$ 1,732,366	\$ 70,000	\$ 335,000
03-04	\$1,956,649	\$ 156,625	\$ 2,113,274	\$ 50,000	\$ 385,000
04-05	\$ 505,006	\$ 62,406	\$ 567,412	\$ 60,000	\$ 445,000
05-06	\$ 662,772	\$ 97,503	\$ 760,275	\$ 100,000	\$ 545,000
06-07	\$ 531,673	\$ 20,553	\$ 552,226	\$ 250,000	\$ 795,000



Career Services

- Number of internships
 - Summer 2003 – Spring 2004 : 70
 - Summer 2004 – Spring 2005 : 164
 - Summer 2005 – Spring 2006 : 238
 - Summer 2006 - Spring 2007 : 259
- 1,049 students and recent alumni registered for career related service during the past one year.
- We have 348 employer accounts from 24 states and the District of Columbia.

Budget data

Fiscal Year	Budgeted SCH	Actual SCH	Tuition Income	State Funding	Assessment
2002-03	43,135	49,795	8,427,891	9,729,110	(5,213,134)
2003-04	45,205	50,394	8,895,338	9,726,765	(5,793,612)
2004-05	47,844	48,809	9,380,575	8,626,727	(4,915,954)
2005-06	47,855	46,221	9,700,016	8,276,130	(5,368,836)
2006-07	47,855	43,768	10,296,794	9,097,873	(5,540,671)
2007-08	42,446		10,573,927*	8,992,459	(5,927,225)

Staffing data

Fiscal Year	Tenure-track Faculty	Clinical Faculty	Lecturers	Staff	Total Personnel
2002-03	60		6	38	128
2003-04	64	1	10	33	123
2004-05	63	2	12	37	131
2005-06	71	4	12	37	137
2006-07	70	4	12	36	135
2007-08	67	8	12	38	125