

# Honeywell: Building Solutions

---

April '05- October '06

**Department of Mechanical  
Engineering  
IUPUI**

Internship Presentation

By: Kreischer Davis

Date: November 2<sup>nd</sup>, 2006

# Overview

---

- Company Background
  - Typical Project Walk-Through
  - Reflections/Recommendations
  - Conclusion
-

# Background: *Student*

---

- Senior ME Student
  - Part-time Internship
  - 1.5 Year Duration
  - 25 Hours/Week
-

# Background: *Company*

---

- Fortune 500
  - +100,000 Employees Worldwide
  - \$25.6 Billion/year
  - 4 Divisions
    - Automation & Control Solutions
    - Aerospace & Defense
    - Specialty Materials
    - Transportation Systems
-

# Background: *Company*

---

- Most Recognizable Products
  - Round Thermostats
  - Auto Products: Prestone, Fram, and Autolite
  - Security Systems



# Background: *Company*

---

- Automation & Control Solutions
    - Building Solutions
      - Central Energy Services
  - Create & Implement Designs That Make Buildings More Energy Efficient
  - Solutions Designed by Performance Contracting Engineer (PCE)
-

# Work Overview

---

- Work Directly Under PCE's along with Salesman for Projects
  - Assignments Not Standardized, Rather Done According to PCE's Desire
  - Data Entry & Analysis, Rate Schedule Research, Energy Software Development
-

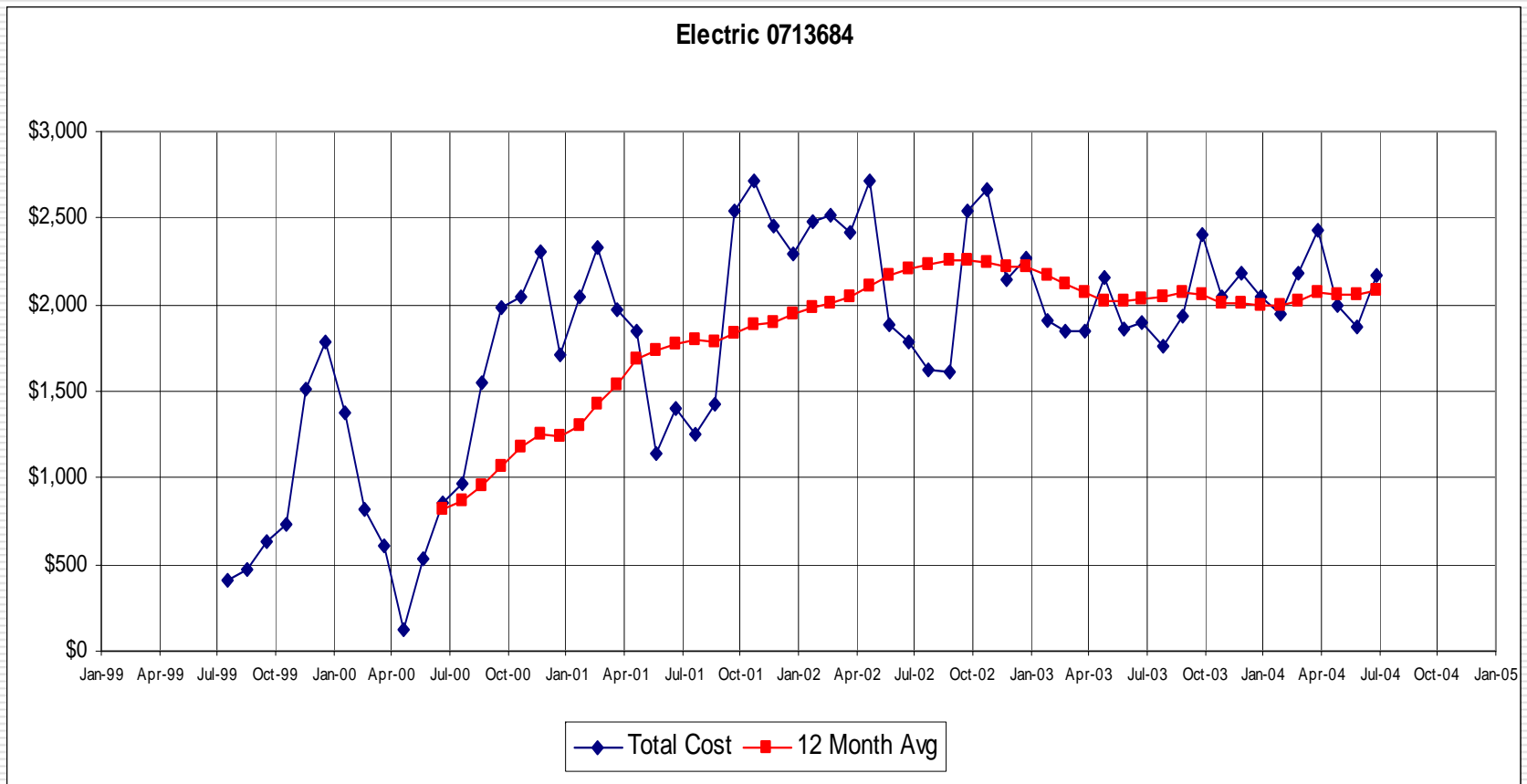
# Projects: *Start to Finish*

---

## Energy Bills:

- Enter Relevant Information Into Excel
  - Put Info Into a Visually Easy Way To Understand For Customer
  - Understand What Usage is Doing and Why
-

# Projects: *Start to Finish*



# Projects: *Start to Finish*

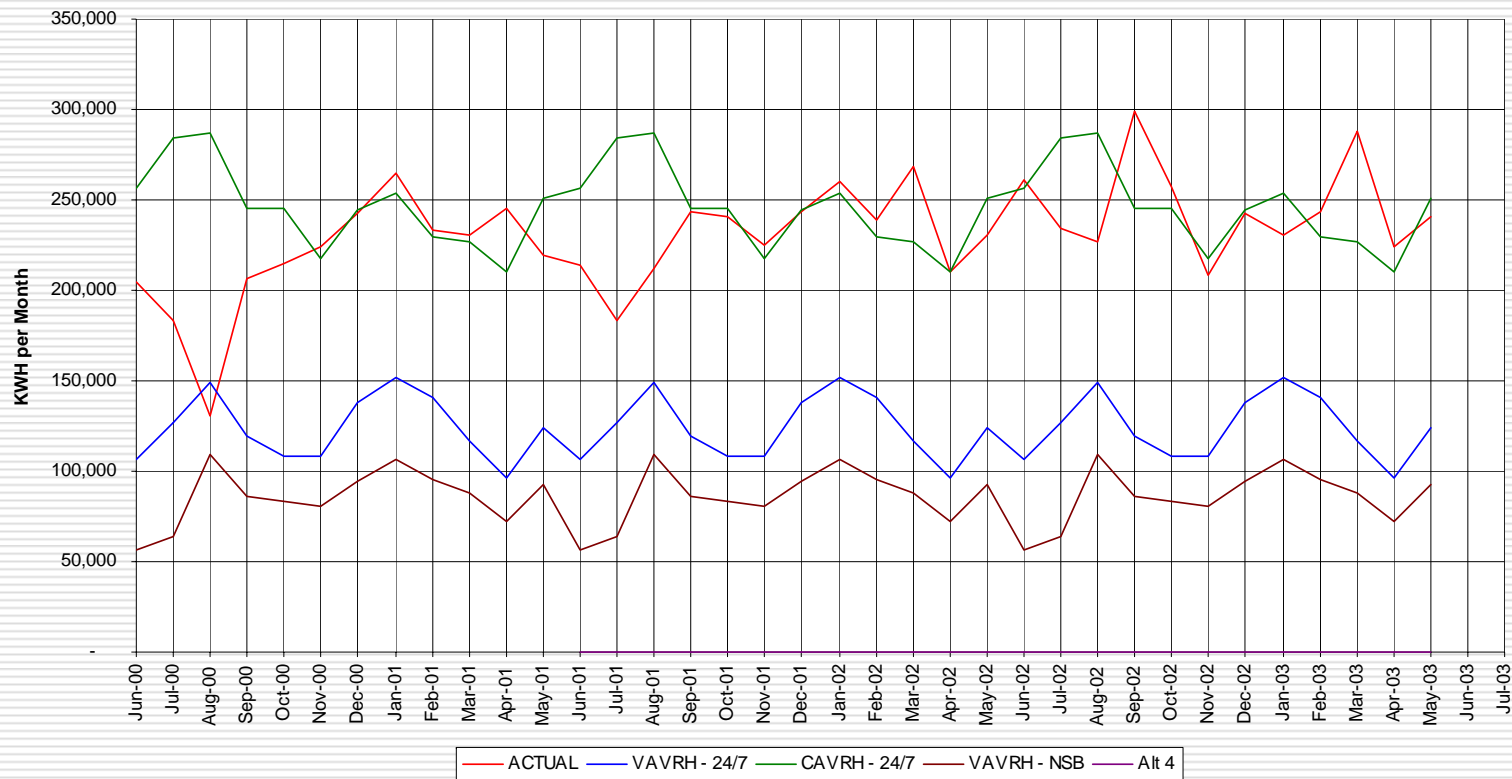
---

## Energy Software Development:

- Trane Energy Software: *Trace 700*
  - Requires Building & Equipment Information Provided by Plans
  - PCE's Take General Skeleton & Fine Tune to Simulate Actual Usage
-

# Projects: *Start to Finish*

Watkins HS Calibration Electrical Usage



# Projects: *Start to Finish*

---

## Other Tasks:

- Reviewing Project Reports
  - Equipment Surveying
  - Provide Additional Information During Customer Meetings
-

# Reflections - Recommendations

---

- Gained Better Understanding of:
    - Large Company Culture
    - Workplace Environment
    - Project Development
  - Seen How Good Leader Promotes Positive Environment in Workplace
  - Experienced Good/Questionable Ethics
-

# Reflections - Recommendations

---

- Would Like More Training
  - Standardize Intern Development
-

# Conclusion

---

- Company Background
  - Typical Project Walk-Through
  - Reflections/Recommendations
-

# Questions??

---